

## Product datasheet for **TP306991L**

### CD94 (KLRD1) (NM\_002262) Human Recombinant Protein

#### Product data:

Product Type:	Recombinant Proteins
Description:	Recombinant protein of human killer cell lectin-like receptor subfamily D, member 1 (KLRD1), transcript variant 1, 1 mg
Species:	Human
Expression Host:	HEK293T
Expression cDNA Clone or AA Sequence:	>RC206991 protein sequence <b>Red</b> =Cloning site <b>Green</b> =Tags(s)
	 MAVFKTTLWRLISGTLGIICLSMATLGILLKNSFTKLSIEAFTPGPNIELQKDSGCCSCQEKWVGYRC NCYFISSEQKTWNESRHLCASQKSSLLQLQNTDELDFMSSSQQFYWIGLSYSEEHTAWLWENGSAALSQYL FPSFETFNTKNCIAYNPNGNALDESCEDKNRYICKQQLI  <b>TRTRPLEQKLISEEDLAANDILDYKDDDDKV</b>
Tag:	C-Myc/DDK
Predicted MW:	20.3 kDa
Concentration:	>0.05 µg/µL as determined by microplate BCA method
Purity:	> 80% as determined by SDS-PAGE and Coomassie blue staining
Buffer:	25 mM Tris-HCl, 100 mM glycine, pH 7.3, 10% glycerol
Preparation:	Recombinant protein was captured through anti-DDK affinity column followed by conventional chromatography steps.
Note:	For testing in cell culture applications, please filter before use. Note that you may experience some loss of protein during the filtration process.
Storage:	Store at -80°C.
Stability:	Stable for 12 months from the date of receipt of the product under proper storage and handling conditions. Avoid repeated freeze-thaw cycles.
RefSeq:	<a href="#">NP_002253</a>
Locus ID:	3824
UniProt ID:	<a href="#">Q13241</a> , <a href="#">Q53ZY6</a>



[View online »](#)

RefSeq Size: 3258

Cytogenetics: 12p13.2

RefSeq ORF: 537

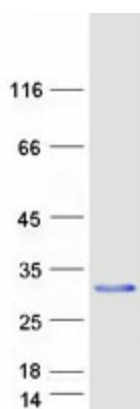
Synonyms: CD94

**Summary:** Natural killer (NK) cells are a distinct lineage of lymphocytes that mediate cytotoxic activity and secrete cytokines upon immune stimulation. Several genes of the C-type lectin superfamily, including members of the NKG2 family, are expressed by NK cells and may be involved in the regulation of NK cell function. KLRD1 (CD94) is an antigen preferentially expressed on NK cells and is classified as a type II membrane protein because it has an external C terminus. Several transcript variants encoding different isoforms have been found for this gene. [provided by RefSeq, May 2017]

**Protein Families:** Transmembrane

**Protein Pathways:** Antigen processing and presentation, Graft-versus-host disease, Natural killer cell mediated cytotoxicity

### Product images:



Coomassie blue staining of purified KLRD1 protein (Cat# [TP306991]). The protein was produced from HEK293T cells transfected with KLRD1 cDNA clone (Cat# [RC206991]) using MegaTran 2.0 (Cat# [TT210002]).