

Product datasheet for **TP306974M**

TORC1 (CRTC1) (NM_015321) Human Recombinant Protein

Product data:

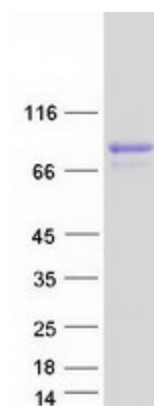
Product Type:	Recombinant Proteins
Description:	Recombinant protein of human CREB regulated transcription coactivator 1 (CRTC1), transcript variant 1, 100 µg
Species:	Human
Expression Host:	HEK293T
Expression cDNA Clone or AA Sequence:	>RC206974 representing NM_015321 Red =Cloning site Green =Tags(s)
	<p>MATSNNPRKFSEKIALHNQKQAEETAAFEVEMKDLSTRAARLQLQKSQYLQLGPSRGQYYGGSLPNVNO IGSGTMDLPFQTPFQSSGLDTSRTRHHGLVDRVYRERGLGSPHRRPLSVDKHGRQADSCPYGTMYLSP PADTSWRRTNSDSALHQSTMTPTQPESFSSGSQDVHQKRVLLLTPGMEETTSEADKNLSKQAWDTKKTG SRPKSCEVPGINIFPSADQENTTALIPATHNTGGSLPDLTNIHFPSPLPTPLDPEEPTFPALSSSSSTGN LAANLTHLGIGGAGQGMSTPGSSPQHRPAGVSPLSLSTEARRQASPALSPLSPITQAVAMDALSLEQQL PYAFFTQAGSQQPPPPQPPPPPPASQQPPPPPPQAPVRLPPGGPLLPSASLTRGPQPPPLAVTVPSS LPQSPPENPGQPSMGIDIASAPALQQYRTSAGSPANQSPTSPVSNQGFSPGSSPQHTSTLGSVFGDAYYE QQMAARQANALSHQLEQFNMMENAISSSSLYSPGSTLNYSQAAMMGLTGSHGSLPDSQQLGYASHSGIPN IILVTGESPPSLSKELTSSLAGVGDVSDSDSQFPLDELKIDPLTLDGLHMLNDPDMVLADPATEDTFR MDRL</p> <p>SGPTRRRLEQKLISEEDLAANDILDYKDDDDKV</p>
Tag:	C-Myc/DDK
Predicted MW:	67.1 kDa
Concentration:	>0.05 µg/µL as determined by microplate BCA method
Purity:	> 80% as determined by SDS-PAGE and Coomassie blue staining
Buffer:	25 mM Tris-HCl, 100 mM glycine, pH 7.3, 10% glycerol
Preparation:	Recombinant protein was captured through anti-DDK affinity column followed by conventional chromatography steps.
Note:	For testing in cell culture applications, please filter before use. Note that you may experience some loss of protein during the filtration process.
Storage:	Store at -80°C.



[View online »](#)

Stability:	Stable for 12 months from the date of receipt of the product under proper storage and handling conditions. Avoid repeated freeze-thaw cycles.
RefSeq:	NP_056136
Locus ID:	23373
UniProt ID:	Q6UUV9
RefSeq Size:	2505
Cytogenetics:	19p13.11
RefSeq ORF:	1902
Synonyms:	Mam-2; MAML2; MECT1; TORC-1; TORC1; WAMTP1
Summary:	Transcriptional coactivator for CREB1 which activates transcription through both consensus and variant cAMP response element (CRE) sites. Acts as a coactivator, in the SIK/TORC signaling pathway, being active when dephosphorylated and acts independently of CREB1 'Ser-133' phosphorylation. Enhances the interaction of CREB1 with TAF4. Regulates the expression of specific CREB-activated genes such as the steroidogenic gene, StAR. Potent coactivator of PGC1alpha and inducer of mitochondrial biogenesis in muscle cells. In the hippocampus, involved in late-phase long-term potentiation (L-LTP) maintenance at the Schaffer collateral-CA1 synapses. May be required for dendritic growth of developing cortical neurons (By similarity). In concert with SIK1, regulates the light-induced entrainment of the circadian clock. In response to light stimulus, coactivates the CREB-mediated transcription of PER1 which plays an important role in the photic entrainment of the circadian clock.[UniProtKB/Swiss-Prot Function]
Protein Families:	Transcription Factors

Product images:



Coomassie blue staining of purified CRTC1 protein (Cat# [TP306974]). The protein was produced from HEK293T cells transfected with CRTC1 cDNA clone (Cat# [RC206974]) using MegaTran 2.0 (Cat# [TT210002]).