

Product datasheet for **TP306974L**

TORC1 (CRTC1) (NM_015321) Human Recombinant Protein

Product data:

Product Type:	Recombinant Proteins
Description:	Recombinant protein of human CREB regulated transcription coactivator 1 (CRTC1), transcript variant 1, 1 mg
Species:	Human
Expression Host:	HEK293T
Expression cDNA Clone or AA Sequence:	>RC206974 representing NM_015321 Red =Cloning site Green =Tags(s)

MATSNNPRKFSEKIALHNQKQAEETAAFEVMDKLSLTRAARLQLQKSQYLQLGPSRGQYYGGSLPNVN
Q
IGSGTMDLPFQTPFQSSGLDTSRTTRHHGLVDRVYRERGLGSPHRRPLSVDKHGRQADSCPYGTMYLSP
PADTSWRRNTNSDSALHQSTMTPTQPESFSSGSQDVHQKRVLLLTVPGMEETTSEADKNLSKQAWDTKKT
G
SRPKSCEVPGINIFPSADQENTTALIPATHNTGGSLPDLTNIHFPSPLPTPLDPEEPTFPALSSSSSTGN
LAANLTHLGIGGAGQGMSTPGSSPQHRPAGVSPSLSTEARRQQASPALSPLSPITQAVAMDALSLEQQ
PYAFFTQAGSQQPPPPQPPPPPPASQPPPPPPQAPVRLPPGGPLLPSASLTRGPQPPPLAVTPSS
LPQSPPENPGQPSMGIDIASAPALQYRTSAGSPANQSPTSPVSNQGFSPGSSPQHTSTLGSVFGDAYYE
QQMAARQANALSHQLEQFNMMENAISSSSLYSPGSTLNYSQAAMMGLTGSHGSLPDSQQLGYASHSGI
PN
IILVTGESPPSLSKELTSSLAGVGDVSFSDSQFPLDELKIDPLTLDGLHMLNDPDMVLADPATEDTFR
MDRL

SGPTRRRLEQKLISEEDLAANDILDYKDDDDKV

Tag:	C-Myc/DDK
Predicted MW:	67.1 kDa
Concentration:	>0.05 µg/µL as determined by microplate BCA method
Purity:	> 80% as determined by SDS-PAGE and Coomassie blue staining
Buffer:	25 mM Tris-HCl, 100 mM glycine, pH 7.3, 10% glycerol
Preparation:	Recombinant protein was captured through anti-DDK affinity column followed by conventional chromatography steps.



[View online »](#)

Note: For testing in cell culture applications, please filter before use. Note that you may experience some loss of protein during the filtration process.

Storage: Store at -80°C.

Stability: Stable for 12 months from the date of receipt of the product under proper storage and handling conditions. Avoid repeated freeze-thaw cycles.

RefSeq: [NP_056136](#)

Locus ID: 23373

UniProt ID: [Q6UUV9](#)

RefSeq Size: 2505

Cytogenetics: 19p13.11

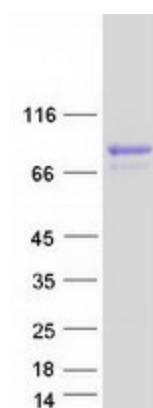
RefSeq ORF: 1902

Synonyms: Mam-2; MAML2; MECT1; TORC-1; TORC1; WAMTP1

Summary: Transcriptional coactivator for CREB1 which activates transcription through both consensus and variant cAMP response element (CRE) sites. Acts as a coactivator, in the SIK/TORC signaling pathway, being active when dephosphorylated and acts independently of CREB1 'Ser-133' phosphorylation. Enhances the interaction of CREB1 with TAF4. Regulates the expression of specific CREB-activated genes such as the steroidogenic gene, StAR. Potent coactivator of PGC1alpha and inducer of mitochondrial biogenesis in muscle cells. In the hippocampus, involved in late-phase long-term potentiation (L-LTP) maintenance at the Schaffer collateral-CA1 synapses. May be required for dendritic growth of developing cortical neurons (By similarity). In concert with SIK1, regulates the light-induced entrainment of the circadian clock. In response to light stimulus, coactivates the CREB-mediated transcription of PER1 which plays an important role in the photic entrainment of the circadian clock. [UniProtKB/Swiss-Prot Function]

Protein Families: Transcription Factors

Product images:



Coomassie blue staining of purified CRTC1 protein (Cat# [TP306974]). The protein was produced from HEK293T cells transfected with CRTC1 cDNA clone (Cat# [RC206974]) using MegaTran 2.0 (Cat# [TT210002]).