

## Product datasheet for TP306966M

### SLC25A16 (NM\_152707) Human Recombinant Protein

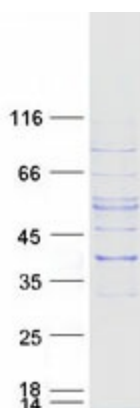
#### Product data:

Product Type:	Recombinant Proteins
Description:	Recombinant protein of human solute carrier family 25 (mitochondrial carrier; Graves disease autoantigen), member 16 (SLC25A16), nuclear gene encoding mitochondrial protein, 100 µg
Species:	Human
Expression Host:	HEK293T
Expression cDNA Clone or AA Sequence:	>RC206966 protein sequence <span style="color: red;">Red</span> =Cloning site <span style="color: green;">Green</span> =Tags(s)  MAAATAAAALAAADPPPAMPQAAGAGGPTTTRDFYWLRSFLAGGIAGCCAKTTPAPLDRVKVLLQAHNH H YKHLGVFSALRAVPQKEGFLGLYKNGAMMIRIFPYGAIQFMAFEHYKTLITTKLGISGHVHRLMAGSMA GMTAVICTYPLDMVRVRLAFQVKGEHSYTGIIHAFKTIYAKEGGFFGFYRGLMPTILGMAPYAGVSFFTF GTLKSGLSHAPTLGRPSSDNPVNLVVKTHVNLLCGGVAGAIQAQTISYPFDVTRRRMQLGTVLPEFEKC LTMRDTMKYVYGHHGIRKGLYRGLSLNYIRCIPSQAVAFITYELMKQFFHLN  <span style="color: red;">TR</span> <span style="color: green;">TRPLEQKLISEEDLAANDILDYKDDDDKV</span>
Tag:	C-Myc/DDK
Predicted MW:	36 kDa
Concentration:	>0.05 µg/µL as determined by microplate BCA method
Purity:	> 80% as determined by SDS-PAGE and Coomassie blue staining
Buffer:	25 mM Tris-HCl, 100 mM glycine, pH 7.3, 10% glycerol
Preparation:	Recombinant protein was captured through anti-DDK affinity column followed by conventional chromatography steps.
Note:	For testing in cell culture applications, please filter before use. Note that you may experience some loss of protein during the filtration process.
Storage:	Store at -80°C.
Stability:	Stable for 12 months from the date of receipt of the product under proper storage and handling conditions. Avoid repeated freeze-thaw cycles.
RefSeq:	<u><a href="#">NP_689920</a></u>


[View online »](#)

Locus ID:	8034
UniProt ID:	<u>P16260</u>
RefSeq Size:	2264
Cytogenetics:	10q21.3
RefSeq ORF:	996
Synonyms:	D10S105E; GDA; GDC; HGT.1; hML7; ML7
Summary:	This gene encodes a protein that contains three tandemly repeated mitochondrial carrier protein domains. The encoded protein is localized in the inner membrane and facilitates the rapid transport and exchange of molecules between the cytosol and the mitochondrial matrix space. This gene has a possible role in Graves' disease. [provided by RefSeq, Jul 2008]
Protein Families:	Druggable Genome

### Product images:



Coomassie blue staining of purified SLC25A16 protein (Cat# [TP306966]). The protein was produced from HEK293T cells transfected with SLC25A16 cDNA clone (Cat# [RC206966]) using MegaTran 2.0 (Cat# [TT210002]).