

## Product datasheet for **TP306946L**

### **RAB37 (NM\_175738) Human Recombinant Protein**

#### Product data:

Product Type:	Recombinant Proteins
Description:	Recombinant protein of human RAB37, member RAS oncogene family (RAB37), transcript variant 3, 1 mg
Species:	Human
Expression Host:	HEK293T
Expression cDNA Clone or AA Sequence:	>RC206946 protein sequence <b>Red</b> =Cloning site <b>Green</b> =Tags(s)
	 MDLQRPDSYQGGAGPDFNDHVLHKTILVGD SGVGKTSLLVQFDQ GK FIPGSFSATV GIGFTNKVTV DGV RVK LQIWD TAGQERFR SVTHAYRDAQALLLYDITNKSSFDNIRAWL TEIHEYAQRD VIMLLGNKADM SSERVISEDGETLAREYGV PFL ETS AKTG MNV ELAFLAI AKELKYRAGHQ ADEPSFQIRDYVESQKKRS SCCSFM  <b>TRTRPLEQKLISEEDLAANDILDYKDDDDKV</b>
Tag:	C-Myc/DDK
Predicted MW:	24 kDa
Concentration:	>0.05 µg/µL as determined by microplate BCA method
Purity:	> 80% as determined by SDS-PAGE and Coomassie blue staining
Buffer:	25 mM Tris-HCl, 100 mM glycine, pH 7.3, 10% glycerol
Preparation:	Recombinant protein was captured through anti-DDK affinity column followed by conventional chromatography steps.
Note:	For testing in cell culture applications, please filter before use. Note that you may experience some loss of protein during the filtration process.
Storage:	Store at -80°C.
Stability:	Stable for 12 months from the date of receipt of the product under proper storage and handling conditions. Avoid repeated freeze-thaw cycles.
RefSeq:	<u><a href="#">NP_783865</a></u>
Locus ID:	326624



[View online »](#)

UniProt ID: [Q96AX2](#)

RefSeq Size: 3091

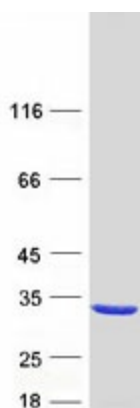
Cytogenetics: 17q25.1

RefSeq ORF: 648

**Summary:** Rab proteins are low molecular mass GTPases that are critical regulators of vesicle trafficking. For additional background information on Rab proteins, see MIM 179508.[supplied by OMIM, Apr 2006]

**Protein Families:** Druggable Genome, Secreted Protein

### Product images:



Coomassie blue staining of purified RAB37 protein (Cat# [TP306946]). The protein was produced from HEK293T cells transfected with RAB37 cDNA clone (Cat# [RC206946]) using MegaTran 2.0 (Cat# [TT210002]).