

Product datasheet for TP306930

CYP27C1 (NM_001001665) Human Recombinant Protein

Product data:

Product Type:	Recombinant Proteins
Description:	Recombinant protein of human cytochrome P450, family 27, subfamily C, polypeptide 1 (CYP27C1), 20 µg
Species:	Human
Expression Host:	HEK293T
Expression cDNA Clone or AA Sequence:	>RC206930 representing NM_001001665 Red =Cloning site Green =Tags(s)
	MRSVLRQRILKPKDVAIYSGEVNQVIADLIKRIYLLRSQAEDGETVTNVNDLFFKYSMEGVATILYESRL GCLENSIPQLTVEYIEALELMFSMFKTSMYAGAIPRWLRPFIPKPWREFCRSWDGLFKFSQIHVDNKL IQYQMDRGRRVSGLLTYLFLSQALTQEIYANVTEMLLAGVDTSFTLSWTVYILARHPEVQQTVYREI VKNLGERHVPTAADVPKVPLVRALLKETLRLFPVLPNGRVTQEDLVIGGYLIPKGTQLALCHYATSYQD ENFPRAKEFRPERWLRKGDLDNRVDFGSIPIFGHGVRSICGRRIAELEIHLVVIQLLQHFEIKTSSQTNAV HAKTHGLLTPGGPIHVRVNRK
	TRTRPLEQKLISEEDLAANDILDYKDDDDKV
Tag:	C-Myc/DDK
Predicted MW:	42.5 kDa
Concentration:	>0.05 µg/µL as determined by microplate BCA method
Purity:	> 80% as determined by SDS-PAGE and Coomassie blue staining
Buffer:	25 mM Tris-HCl, 100 mM glycine, pH 7.3, 10% glycerol
Preparation:	Recombinant protein was captured through anti-DDK affinity column followed by conventional chromatography steps.
Note:	For testing in cell culture applications, please filter before use. Note that you may experience some loss of protein during the filtration process.
Storage:	Store at -80°C.
Stability:	Stable for 12 months from the date of receipt of the product under proper storage and handling conditions. Avoid repeated freeze-thaw cycles.
RefSeq:	<u>NP_001001665</u>



[View online »](#)

Locus ID: 339761

UniProt ID: [Q4G0S4](#)

RefSeq Size: 4725

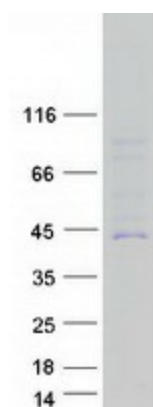
Cytogenetics: 2q14.3

RefSeq ORF: 1116

Summary: This gene encodes a member of the cytochrome P450 superfamily of enzymes. The cytochrome P450 proteins are monooxygenases which catalyze many reactions involved in drug metabolism and synthesis of cholesterol, steroids and other lipids. [provided by RefSeq, Jul 2008]

Protein Families: Druggable Genome, P450

Product images:



Coomassie blue staining of purified CYP27C1 protein (Cat# TP306930). The protein was produced from HEK293T cells transfected with CYP27C1 cDNA clone (Cat# [RC206930]) using MegaTran 2.0 (Cat# [TT210002]).