

## Product datasheet for **TP306853M**

### GRB10 (NM\_001001555) Human Recombinant Protein

#### Product data:

Product Type:	Recombinant Proteins
Description:	Recombinant protein of human growth factor receptor-bound protein 10 (GRB10), transcript variant 4, 100 µg
Species:	Human
Expression Host:	HEK293T
Expression cDNA Clone or AA Sequence:	>RC206853 protein sequence <b>Red</b> =Cloning site <b>Green</b> =Tags(s)

MNASLESLSYACSMQSDTVPLLQNGQHARSQPRASGPPRSIQPVSPRQRVQRSQPVHILAVRRLQEEDQ  
QFRTSSLPAIPNPFPELCPGPGSPPVLTGSLPPSQAQAAKQDVKVFSEDTGTSKVEILADMTARDLCQLLV  
YKSHCVDDNSWTLVEHHPHLGLERCLEDELVVQVESTMASESKFLFRKNYAKYEFFKNPMNFFPEQMVT  
WCQQSNGSQTQLLQNFLNSSCPEIQGFLHVKELGKKSWKLYVCLRRSGLYCSTKGTSGKEPRHLQLLAD  
LEDNIFSLIAGRKQYNAPTDHGLCIKPNKVRNETKELRLLCAEDEQTRTCWMTAFRLLKYGMMLLYQNYR  
IPQQRKALLSPFSTPVRVSSENSLVAMDFSGQTGRVIENPAEAQSAALEEGHAWRKRSTRMNILGSQSPL  
HPSTLSTVIHRTQHWFHGRISREESHRIKQQGLVDGLFLLRDSQSNPKAFVLTLCCHQKIKNFQILPCE  
DDGQTFSLDDGNTKFSDLIQLVDFYQLNKGVLPCCLKHHCIRVAL

**SGPTRTRPLEQKLISEEDLAANDILDYKDDDDKV**

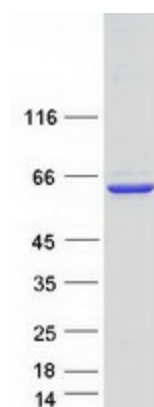
Tag:	C-Myc/DDK
Predicted MW:	60.7 kDa
Concentration:	>0.05 µg/µL as determined by microplate BCA method
Purity:	> 80% as determined by SDS-PAGE and Coomassie blue staining
Buffer:	25 mM Tris-HCl, 100 mM glycine, pH 7.3, 10% glycerol
Preparation:	Recombinant protein was captured through anti-DDK affinity column followed by conventional chromatography steps.
Note:	For testing in cell culture applications, please filter before use. Note that you may experience some loss of protein during the filtration process.
Storage:	Store at -80°C.



[View online »](#)

<b>Stability:</b>	Stable for 12 months from the date of receipt of the product under proper storage and handling conditions. Avoid repeated freeze-thaw cycles.
<b>RefSeq:</b>	<a href="#">NP_001001555</a>
<b>Locus ID:</b>	2887
<b>UniProt ID:</b>	<a href="#">Q13322</a>
<b>RefSeq Size:</b>	5040
<b>Cytogenetics:</b>	7p12.1
<b>RefSeq ORF:</b>	1608
<b>Synonyms:</b>	Grb-10; GRB-IR; IRBP; MEG1; RSS
<b>Summary:</b>	The product of this gene belongs to a small family of adapter proteins that are known to interact with a number of receptor tyrosine kinases and signaling molecules. This gene encodes a growth factor receptor-binding protein that interacts with insulin receptors and insulin-like growth-factor receptors. Overexpression of some isoforms of the encoded protein inhibits tyrosine kinase activity and results in growth suppression. This gene is imprinted in a highly isoform- and tissue-specific manner, with expression observed from the paternal allele in the brain, and from the maternal allele in the placental trophoblasts. Alternatively spliced transcript variants encoding different isoforms have been identified. [provided by RefSeq, Oct 2010]
<b>Protein Families:</b>	Druggable Genome

### Product images:



Coomassie blue staining of purified GRB10 protein (Cat# [TP306853]). The protein was produced from HEK293T cells transfected with GRB10 cDNA clone (Cat# [RC206853]) using MegaTran 2.0 (Cat# [TT210002]).