

Product datasheet for TP306850

GNAI3 (NM_006496) Human Recombinant Protein

Product data:

Product Type:	Recombinant Proteins
Description:	Recombinant protein of human guanine nucleotide binding protein (G protein), alpha inhibiting activity polypeptide 3 (GNAI3), 20 µg
Species:	Human
Expression Host:	HEK293T
Expression cDNA Clone or AA Sequence:	>RC206850 protein sequence Red =Cloning site Green =Tags(s)
	<p>MGCTLSAEDKAAVERSKMIDRNLRDGEKAAKEVKLLLLGAGESGKSTIVKQMKIIHEDGYSEDECKQYK VVYSNTIQSIIAIRAMGRLKIDFGEAARADDARQLFVLAGSAEEGVMTELAGVIKRLWRDGGVQACF SRSREYQLNDSASYLNDLDRISQSNIPTQQDVLTRVKTGIVETHFTFKDLFYKMFVGGQRSERKK WIHCFEGVTAIIFCVALS DYDLVLAEDEEMNRMHESMKLFDSICNNKWF TETSII LFLNKKDLFE EKIKR SPLTICYPEYTGSN TYEEAAAYIQCFEDLNRRKDTKEIYTHFTCATDTKNVQVFDAVTDVIIKNLKE CGLY</p> <p>TRTRPLEQKLISEEDLAANDILDYKDDDDKV</p>
Tag:	C-Myc/DDK
Predicted MW:	40.4 kDa
Concentration:	>0.05 µg/µL as determined by microplate BCA method
Purity:	> 80% as determined by SDS-PAGE and Coomassie blue staining
Buffer:	25 mM Tris-HCl, 100 mM glycine, pH 7.3, 10% glycerol
Preparation:	Recombinant protein was captured through anti-DDK affinity column followed by conventional chromatography steps.
Note:	For testing in cell culture applications, please filter before use. Note that you may experience some loss of protein during the filtration process.
Storage:	Store at -80°C.
Stability:	Stable for 12 months from the date of receipt of the product under proper storage and handling conditions. Avoid repeated freeze-thaw cycles.
RefSeq:	<u>NP_006487</u>



[View online »](#)

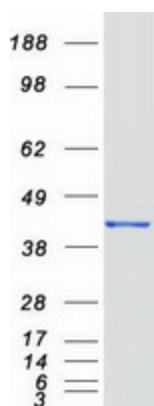
Locus ID: 2773
UniProt ID: [P08754](#)
RefSeq Size: 4748
Cytogenetics: 1p13.3
RefSeq ORF: 1062
Synonyms: 87U6; ARCND1

Summary: Guanine nucleotide-binding proteins (G proteins) are involved as modulators or transducers in various transmembrane signaling pathways. G proteins are composed of 3 units: alpha, beta and gamma. This gene encodes an alpha subunit and belongs to the G-alpha family. Mutation in this gene, resulting in a gly40-to-arg substitution, is associated with auriculocondylar syndrome, and shown to affect downstream targets in the G protein-coupled endothelin receptor pathway. [provided by RefSeq, Jun 2012]

Protein Families: Druggable Genome

Protein Pathways: Axon guidance, Chemokine signaling pathway, Gap junction, Leukocyte transendothelial migration, Long-term depression, Melanogenesis, Progesterone-mediated oocyte maturation, Tight junction

Product images:



Coomassie blue staining of purified GNAI3 protein (Cat# TP306850). The protein was produced from HEK293T cells transfected with GNAI3 cDNA clone (Cat# [RC206850]) using MegaTran 2.0 (Cat# [TT210002]).