

## Product datasheet for TP306845M

### MON1B (NM\_014940) Human Recombinant Protein

#### Product data:

Product Type:	Recombinant Proteins
Description:	Recombinant protein of human MON1 homolog B (yeast) (MON1B), 100 µg
Species:	Human
Expression Host:	HEK293T
Expression cDNA Clone or AA Sequence:	>RC206845 protein sequence <b>Red</b> =Cloning site <b>Green</b> =Tags(s)
	<p>MEVGGDTAAPAPGGAEDLEDTQFPSEEAREGGGVHAVPPDPEDEGLEETGSKDKDQPPSPSPPPQSEALS            STSRLWSPAAPENSPTCSPSSGGQGGDPSDEEWRSQRKHVFLSEAGKPIYSRYGSVEALSATMGVMT            ALVSFVQSAGDAIRAIYAEDHKLVLQGGPLLLVAMSRTSQSAAQLRGELLAVHAQIVSTLTRASVARIF            AHKQNYDLRRLLAGSERTLDRLLDSEMEQDPGALLGAVRCVPLARPLRDALGALLRRCTAPGLLSVLAV            GGRLITAAQERNVLAECRLDPADLQLLLDWVGAPAFAGEAWAPVCLPRFNPDGFFYAYVARLDAMPVCL            LLLGTQREAFHAMAACRRLVEDGMHALGAMRALGEAASFNSASSASAPYSVQAVGAPGLRHFLYKPLDI            PDHHRQLPQFTSPELEAPYSREEERQLSDLYHRLHARLHSTSRPLRLIYHVAEKETLLAWVTSKFELYT            CLSPLVTKAGAILVWTKLLRWVKKEEDRLFIRYPPKYSTPPATSTDQAAHNGLFTGL</p> <p><b>TRTRPLEQKLISEEDLAANDILDYKDDDDKV</b></p>
Tag:	C-Myc/DDK
Predicted MW:	59 kDa
Concentration:	>0.05 µg/µL as determined by microplate BCA method
Purity:	> 80% as determined by SDS-PAGE and Coomassie blue staining
Buffer:	25 mM Tris-HCl, 100 mM glycine, pH 7.3, 10% glycerol
Preparation:	Recombinant protein was captured through anti-DDK affinity column followed by conventional chromatography steps.
Note:	For testing in cell culture applications, please filter before use. Note that you may experience some loss of protein during the filtration process.
Storage:	Store at -80°C.
Stability:	Stable for 12 months from the date of receipt of the product under proper storage and handling conditions. Avoid repeated freeze-thaw cycles.



[View online >](#)

RefSeq: [NP\\_055755](#)

Locus ID: 22879

UniProt ID: [Q7L1V2](#), [Q6ZR87](#)

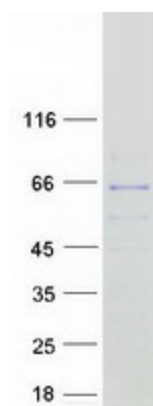
RefSeq Size: 3348

Cytogenetics: 16q23.1

RefSeq ORF: 1641

Synonyms: HSRG1; SAND2; SRG1

### Product images:



Coomassie blue staining of purified MON1B protein (Cat# [TP306845]). The protein was produced from HEK293T cells transfected with MON1B cDNA clone (Cat# [RC206845]) using MegaTran 2.0 (Cat# [TT210002]).