

## Product datasheet for **TP306845L**

### MON1B (NM\_014940) Human Recombinant Protein

#### Product data:

**Product Type:** Recombinant Proteins

**Description:** Recombinant protein of human MON1 homolog B (yeast) (MON1B), 1 mg

**Species:** Human

**Expression Host:** HEK293T

**Expression cDNA Clone or AA Sequence:** >RC206845 protein sequence  
**Red**=Cloning site **Green**=Tags(s)

MEVGGDTAAPAPGGAEDLEDTQFPSEEAREGGGVHAVPPDPEDEGLEETGSKDKDQPPSPSPPPQSEALS  
STSRLWSPAAPENSPTCSPSSGGQGGDPSDEEWRSQRKHVFLVSEAGKPIYSRYGSVEALSATMGVMT  
ALVSFVQSAGDAIRAIYAEDHKLVLQGGPLLLVAMSRTSQSAAQLRGELLAVHAQIVSTLTRASVARIF  
AHKQNYDLRRLLAGSERTLDRLLDSMEQDPGALLGAVRCVPLARPLRDALGALLRRCTAPGLLSVLAV  
GGRLITAAQERNVLAECRLDPADLQLLLDWVGAPAFAGEAWAPVCLPRFNPDGFFYAYVARLDAMPVCL  
LLLGTQREAFHAMAACRRLVEDGMHALGAMRALGEAASFNSASSAPAYSVQAVGAPGLRHFLYKPLDI  
PDHHRQLPQFTSPELEAPYSREEERQLSDLYHRLHARLHSTSRPLRLIYHVAEKETLLAWVTSKFELYT  
CLSPLVTKAGAILVWTKLLRWVKKEEDRLFIRYPPKYSTPPATSTDQAAHNGLFTGL

**TRTRPLEQKLISEEDLAANDILDYKDDDDKV**

**Tag:** C-Myc/DDK

**Predicted MW:** 59 kDa

**Concentration:** >0.05 µg/µL as determined by microplate BCA method

**Purity:** > 80% as determined by SDS-PAGE and Coomassie blue staining

**Buffer:** 25 mM Tris-HCl, 100 mM glycine, pH 7.3, 10% glycerol

**Preparation:** Recombinant protein was captured through anti-DDK affinity column followed by conventional chromatography steps.

**Note:** For testing in cell culture applications, please filter before use. Note that you may experience some loss of protein during the filtration process.

**Storage:** Store at -80°C.

**Stability:** Stable for 12 months from the date of receipt of the product under proper storage and handling conditions. Avoid repeated freeze-thaw cycles.



[View online >](#)

RefSeq: [NP\\_055755](#)

Locus ID: 22879

UniProt ID: [Q7L1V2](#), [Q6ZR87](#)

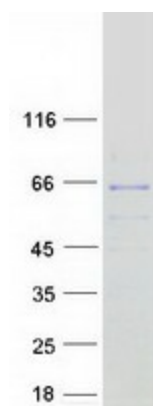
RefSeq Size: 3348

Cytogenetics: 16q23.1

RefSeq ORF: 1641

Synonyms: HSRG1; SAND2; SRG1

### Product images:



Coomassie blue staining of purified MON1B protein (Cat# [TP306845]). The protein was produced from HEK293T cells transfected with MON1B cDNA clone (Cat# [RC206845]) using MegaTran 2.0 (Cat# [TT210002]).