

Product datasheet for TP306845

MON1B (NM_014940) Human Recombinant Protein

Product data:

Product Type:	Recombinant Proteins
Description:	Recombinant protein of human MON1 homolog B (yeast) (MON1B), 20 µg
Species:	Human
Expression Host:	HEK293T
Expression cDNA Clone or AA Sequence:	>RC206845 protein sequence Red=Cloning site Green=Tags(s)

MEVGGDTAAPAPGGAEDLEDTQFPSEEAREGGGVHAVPPDPEDEGLEETGSKDKDQPPSPSPPPQSEALS
STSRLWSPAAPENSPTCSPSSGGQGGDPSDEEWRSQRKHVFLSEAGKPIYSRYGSVEALSATMGVMT
ALVSFVQSAGDAIRAIYAEDHKLVLQGGPLLLVAMSRTSQSAAQLRGELLAVHAQIVSTLTRASVARIF
AHKQNYDLRRLLAGSERTLDRLLDSMEQDPGALLGAVRCVPLARPLRDALGALLRRCTAPGLLSVLAV
GGRLITAAQERNVLAECRLDPADLQLLLDWVGAPAFAGEAWAPVCLPRFNPDGFFAYVARLDAMPVCL
LLLGTQREAFHAMAACRRLVEDGMHALGAMRALGEAASFNSASSAPAYSVQAVGAPGLRHFLYKPLDI
PDHHRQLPQFTSPELEAPYSREEERQLSDLYHRLHARLHSTSRPLRLIYHVAEKETLLAWVTSKFELYT
CLSPLVTKAGAILVWTKLLRWVKKEEDRLFIRYPPKYSTPPATSTDQAAHNGLFTGL

TRTRPLEQKLISEEDLAANDILDYKDDDDKV

Tag:	C-Myc/DDK
Predicted MW:	59 kDa
Concentration:	>0.05 µg/µL as determined by microplate BCA method
Purity:	> 80% as determined by SDS-PAGE and Coomassie blue staining
Buffer:	25 mM Tris-HCl, 100 mM glycine, pH 7.3, 10% glycerol
Preparation:	Recombinant protein was captured through anti-DDK affinity column followed by conventional chromatography steps.
Note:	For testing in cell culture applications, please filter before use. Note that you may experience some loss of protein during the filtration process.
Storage:	Store at -80°C.
Stability:	Stable for 12 months from the date of receipt of the product under proper storage and handling conditions. Avoid repeated freeze-thaw cycles.



[View online >](#)

RefSeq: [NP_055755](#)

Locus ID: 22879

UniProt ID: [Q7L1V2](#), [Q6ZR87](#)

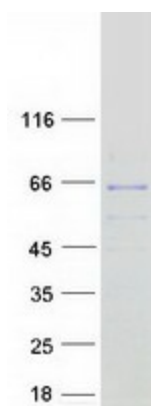
RefSeq Size: 3348

Cytogenetics: 16q23.1

RefSeq ORF: 1641

Synonyms: HSRG1; SAND2; SRG1

Product images:



Coomassie blue staining of purified MON1B protein (Cat# TP306845). The protein was produced from HEK293T cells transfected with MON1B cDNA clone (Cat# [RC206845]) using MegaTran 2.0 (Cat# [TT210002]).