

## Product datasheet for **TP306840L**

### TFE3 (NM\_006521) Human Recombinant Protein

#### Product data:

Product Type:	Recombinant Proteins
Description:	Recombinant protein of human transcription factor binding to IGHM enhancer 3 (TFE3), 1 mg
Species:	Human
Expression Host:	HEK293T
Expression cDNA Clone or AA Sequence:	>RC206840 protein sequence <b>Red</b> =Cloning site <b>Green</b> =Tags(s)

MSHAAEPARDGVEASAEGPRAVFLLEERRPADSAQLLSLNSLLPESGIVADIELENVLDPDSFYELKSQ  
PLPLRSSLPISLQATPATPATLSASSAGGSRTTPAMSSSSSRVLLRQQLMRAQAQEQRERRREQAAAA  
PFSPAPASPAISVVGVSAGGHTLSRPPPAQVPREVLKVQTHLENPTRYHLQARRQVKQYLSTTLGPK  
LASQALTPPPGPASAQPLPAPEAAHTTGPTGSAPNSPMALLTIGSSSEKEIDVIDEISLESSYNDEML  
SYLPGGTTGLQLPSTLPVSGNLLDVYSSQGVATPAITVSNSCPaelPNIKREISETeAKALLKERQKkDN  
HNLIERRRRFNINDRIKELGTLIPKSSDPEMRWNKGTLKASVDYIRKLQKEQQRSKDLESRQRSLEQAN  
RSLQLRIQELELQAQIHGLPVPPTPGLLSLATTSASDSLKPEQLDIEEEGRPGAATFHVGGGPAQNAPHQ  
QPPAPPSDALLDLHFPSDHLGDLGDPFHLGLEDILMEEEEGVVGGLSGGALSPLRAASDPLLSSVSPAVS  
KASSRRSSFSMEEES

**TRTRPLEQKLISEEDLAANDILDYKDDDDKV**

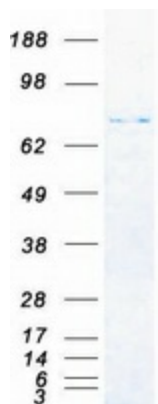
Tag:	C-Myc/DDK
Predicted MW:	61.3 kDa
Concentration:	>0.05 µg/µL as determined by microplate BCA method
Purity:	> 80% as determined by SDS-PAGE and Coomassie blue staining
Buffer:	25 mM Tris-HCl, 100 mM glycine, pH 7.3, 10% glycerol
Preparation:	Recombinant protein was captured through anti-DDK affinity column followed by conventional chromatography steps.
Note:	For testing in cell culture applications, please filter before use. Note that you may experience some loss of protein during the filtration process.
Storage:	Store at -80°C.



[View online »](#)

<b>Stability:</b>	Stable for 12 months from the date of receipt of the product under proper storage and handling conditions. Avoid repeated freeze-thaw cycles.
<b>RefSeq:</b>	<a href="#">NP_006512</a>
<b>Locus ID:</b>	7030
<b>UniProt ID:</b>	<a href="#">P19532</a> , <a href="#">A0A024QZ23</a>
<b>RefSeq Size:</b>	3467
<b>Cytogenetics:</b>	Xp11.23
<b>RefSeq ORF:</b>	1725
<b>Synonyms:</b>	bHLHe33; RCCP2; RCCX1; TFEA
<b>Summary:</b>	This gene encodes a basic helix-loop-helix domain-containing transcription factor that binds MUE3-type E-box sequences in the promoter of genes. The encoded protein promotes the expression of genes downstream of transforming growth factor beta (TGF-beta) signaling. This gene may be involved in chromosomal translocations in renal cell carcinomas and other cancers, resulting in the production of fusion proteins. Translocation partners include PRCC (papillary renal cell carcinoma), NONO (non-POU domain containing, octamer-binding), and ASPSCR1 (alveolar soft part sarcoma chromosome region, candidate 1), among other genes. Alternative splicing results in multiple transcript variants. [provided by RefSeq, Aug 2013]
<b>Protein Families:</b>	Druggable Genome, Transcription Factors

### Product images:



Coomassie blue staining of purified TFE3 protein (Cat# [TP306840]). The protein was produced from HEK293T cells transfected with TFE3 cDNA clone (Cat# [RC206840]) using MegaTran 2.0 (Cat# [TT210002]).