

Product datasheet for **TP306824L**

METTL8 (NM_024770) Human Recombinant Protein

Product data:

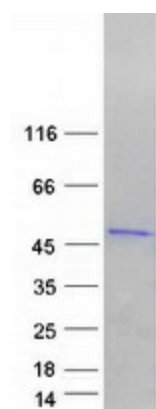
Product Type:	Recombinant Proteins
Description:	Purified recombinant protein of Homo sapiens methyltransferase like 8 (METTL8), 1 mg
Species:	Human
Expression Host:	HEK293T
Expression cDNA Clone or AA Sequence:	>RC206824 representing NM_024770 Red =Cloning site Green =Tags(s)
	<p>MNMIWRNSISCLRLGKVPTRYQSGYHPVAPLGSRLTDPKVFHNMWDHMQWSKEEEAAARKKVKEN SA VRVLLLEEQVKYEREASKYWDTFYKIHKNKFFKDRNWLLREFPEILPVDQKPEEKARESSWDHVKTSATNR FSRMHCPTVPDEKNHYEKSSGSSEGSQSKTESDFSNDSEKHKKGPMETGLFPGSNATFRILEVGCGAGNS VFPILNTLENSPESFLYCCDFASGAVELVKSHSSYRATQCFASFVHDCDDGLPYPFPDGLDVLVFL SSIHPRMQGVNRLSKLLKPGGMLLFRDYGRYDKTQLRFKKGHCLSENFYVRGDGTRAYFFTKGEVHS M FCKASLDEKQNLVDRRLQVNRKKQVKMHRVWIQGFQKPLHQTQNSSNMVSTLLSQD</p> <p>TRTRPLEQKLISEEDLAANDILDYKDDDDKV</p>
Tag:	C-Myc/DDK
Predicted MW:	46.8 kDa
Concentration:	>0.05 µg/µL as determined by microplate BCA method
Purity:	> 80% as determined by SDS-PAGE and Coomassie blue staining
Buffer:	25 mM Tris-HCl, 100 mM glycine, pH 7.3, 10% glycerol
Preparation:	Recombinant protein was captured through anti-DDK affinity column followed by conventional chromatography steps.
Note:	For testing in cell culture applications, please filter before use. Note that you may experience some loss of protein during the filtration process.
Storage:	Store at -80°C.
Stability:	Stable for 12 months from the date of receipt of the product under proper storage and handling conditions. Avoid repeated freeze-thaw cycles.



[View online »](#)

RefSeq:	<u>NP_079046</u>
Locus ID:	79828
UniProt ID:	<u>B3KW44</u>
RefSeq Size:	8154
Cytogenetics:	2q31.1
RefSeq ORF:	1221
Synonyms:	TIP
Summary:	Probable methyltransferase.[UniProtKB/Swiss-Prot Function]
Protein Families:	Druggable Genome

Product images:



Coomassie blue staining of purified METTL8 protein (Cat# [TP306824]). The protein was produced from HEK293T cells transfected with METTL8 cDNA clone (Cat# [RC206824]) using MegaTran 2.0 (Cat# [TT210002]).