

## Product datasheet for TP306815L

### MRFAP1 (NM\_033296) Human Recombinant Protein

#### Product data:

Product Type:	Recombinant Proteins
Description:	Recombinant protein of human Mof4 family associated protein 1 (MRFAP1), 1 mg
Species:	Human
Expression Host:	HEK293T
Expression cDNA Clone or AA Sequence:	>RC206815 protein sequence <span style="color: red;">Red</span> =Cloning site <span style="color: green;">Green</span> =Tags(s)  MRPLDIVELAEPEEEVLEPEEDFEQFLLPVINEMREDIASLTREHGRAYLRNRSKLWEMDNMLIQIKTQ VEASEESALNHLQNPGDAAEGRAAKRCEKAEEKAKEIAKMAEMLVELVRRIEKSESS  <span style="color: red;">TR</span> TRPLEQKLISEEDLAANDILDYKDDDDKV
Tag:	C-Myc/DDK
Predicted MW:	14.5 kDa
Concentration:	>0.05 µg/µL as determined by microplate BCA method
Purity:	> 80% as determined by SDS-PAGE and Coomassie blue staining
Buffer:	25 mM Tris-HCl, 100 mM glycine, pH 7.3, 10% glycerol
Preparation:	Recombinant protein was captured through anti-DDK affinity column followed by conventional chromatography steps.
Note:	For testing in cell culture applications, please filter before use. Note that you may experience some loss of protein during the filtration process.
Storage:	Store at -80°C.
Stability:	Stable for 12 months from the date of receipt of the product under proper storage and handling conditions. Avoid repeated freeze-thaw cycles.
RefSeq:	<a href="#">NP_150638</a>
Locus ID:	93621
UniProt ID:	<a href="#">Q9Y605</a>
RefSeq Size:	2184
Cytogenetics:	4p16.1

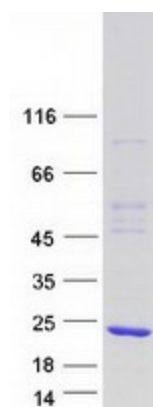

[View online »](#)

RefSeq ORF: 381

Synonyms: PAM14; PGR1

**Summary:** This gene encodes an intracellular protein that interacts with members of the MORF4/MRG (mortality factor on chromosome 4/MORF4 related gene) family and the tumor suppressor Rb (retinoblastoma protein.) The protein may play a role in senescence, cell growth and immortalization. Alternative splicing results in multiple transcript variants. [provided by RefSeq, Jan 2013]

## Product images:



Coomassie blue staining of purified MRFP1 protein (Cat# [TP306815]). The protein was produced from HEK293T cells transfected with MRFP1 cDNA clone (Cat# [RC206815]) using MegaTran 2.0 (Cat# [TT210002]).