

Product datasheet for **TP306796L**

Ramp4 2 (SERP2) (NM_001010897) Human Recombinant Protein

Product data:

Product Type:	Recombinant Proteins
Description:	Recombinant protein of human stress-associated endoplasmic reticulum protein family member 2 (SERP2), 1 mg
Species:	Human
Expression Host:	HEK293T
Expression cDNA Clone or AA Sequence:	>RC206796 protein sequence Red=Cloning site Green=Tags(s)
	MVAKQRIRMANEKHSKNITQRGNVAKTLRPQEEKYPVGPWLLALFVFWCGSAIFQIIQSIRMGM
	TRTRPLEQKLISEEDLAANDILDYKDDDDKV
Tag:	C-Myc/DDK
Predicted MW:	7.3 kDa
Concentration:	>0.05 µg/µL as determined by microplate BCA method
Purity:	> 80% as determined by SDS-PAGE and Coomassie blue staining
Buffer:	25 mM Tris-HCl, 100 mM glycine, pH 7.3, 10% glycerol
Preparation:	Recombinant protein was captured through anti-DDK affinity column followed by conventional chromatography steps.
Note:	For testing in cell culture applications, please filter before use. Note that you may experience some loss of protein during the filtration process.
Storage:	Store at -80°C.
Stability:	Stable for 12 months from the date of receipt of the product under proper storage and handling conditions. Avoid repeated freeze-thaw cycles.
RefSeq:	NP_001010897
Locus ID:	387923
UniProt ID:	Q8N6R1
RefSeq Size:	842
Cytogenetics:	13q14.11



[View online »](#)

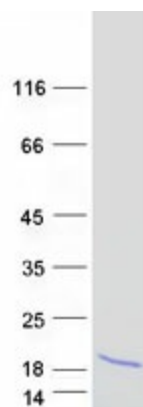
RefSeq ORF: 195

Synonyms: bA269C23.1; C13orf21

Summary: May interact with target proteins during translocation into the lumen of the endoplasmic reticulum. May protect unfolded target proteins against degradation and facilitate correct glycosylation (Potential).[UniProtKB/Swiss-Prot Function]

Protein Families: Transmembrane

Product images:



Coomassie blue staining of purified SERP2 protein (Cat# [TP306796]). The protein was produced from HEK293T cells transfected with SERP2 cDNA clone (Cat# [RC206796]) using MegaTran 2.0 (Cat# [TT210002]).