

Product datasheet for **TP306778M**

CYTL1 (NM_018659) Human Recombinant Protein

Product data:

Product Type: Recombinant Proteins

Description: Recombinant protein of human cytokine-like 1 (CYTL1), 100 µg

Species: Human

Expression Host: HEK293T

**Expression cDNA Clone
or AA Sequence:** >RC206778 protein sequence
Red=Cloning site **Green**=Tags(s)

MRTPGPLPVLLLLLAGAPAARPTPPTCYSRMRALSQEITRDFNLLQVSESEPCVRYLPRLYLDIHNYCV
LDKLRDFVASPPCWKVAQVDSLKDKARKLYTIMNSFCRRDLVFLDDCNALEYPIPVTTVLPDRQR

TRTRPLEQKLISEEDLAANDILDYKDDDDKV

Tag: C-Myc/DDK

Predicted MW: 15.4 kDa

Concentration: >0.05 µg/µL as determined by microplate BCA method

Purity: > 80% as determined by SDS-PAGE and Coomassie blue staining

Buffer: 25 mM Tris-HCl, 100 mM glycine, pH 7.3, 10% glycerol

Bioactivity: Cell treatment (PMID: [28244648](#))

Preparation: Recombinant protein was captured through anti-DDK affinity column followed by conventional chromatography steps.

Note: For testing in cell culture applications, please filter before use. Note that you may experience some loss of protein during the filtration process.

Storage: Store at -80°C.

Stability: Stable for 12 months from the date of receipt of the product under proper storage and handling conditions. Avoid repeated freeze-thaw cycles.

RefSeq: [NP_061129](#)

Locus ID: 54360

UniProt ID: [Q9NRR1](#)

RefSeq Size: 1019



[View online »](#)

Cytogenetics: 4p16.2

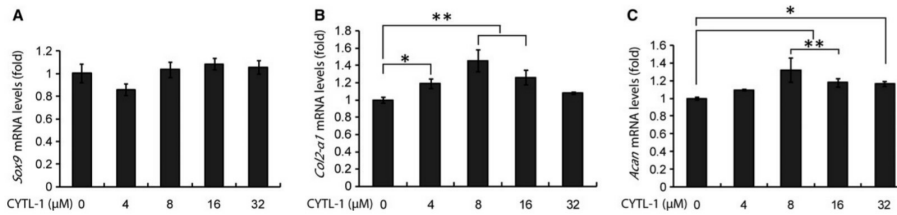
RefSeq ORF: 408

Synonyms: C4orf4; C17

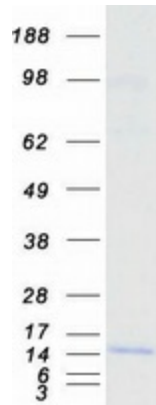
Summary: C17 is a cytokine-like protein specifically expressed in bone marrow and cord blood mononuclear cells that bear the CD34 (MIM 142230) surface marker (Liu et al., 2000 [PubMed 10857752]).[supplied by OMIM, Mar 2008]

Protein Families: Druggable Genome, Secreted Protein

Product images:



Regulatory action of CYTL-1 protein on the gene expression of Sox9, Col2-a1, and Acan in cultured chondrocytes. Cells were grown in DMEM-F12 medium containing serially-diluted CYTL-1 protein (OriGene [TP306778]) and used in cDNA template synthesis for qRT-PCR analyses. The house-keeping gene GAPDH served as an internal reference. * P < 0.05; ** P < 0.01. Figure cited from J Cell Mol Med, PMID: 28244648



Coomassie blue staining of purified CYTL1 protein (Cat# [TP306778]). The protein was produced from HEK293T cells transfected with CYTL1 cDNA clone (Cat# [RC206778]) using MegaTran 2.0 (Cat# [TT210002]).