

Product datasheet for **TP306778L**

CYTL1 (NM_018659) Human Recombinant Protein

Product data:

Product Type:	Recombinant Proteins
Description:	Recombinant protein of human cytokine-like 1 (CYTL1), 1 mg
Species:	Human
Expression Host:	HEK293T
Expression cDNA Clone or AA Sequence:	>RC206778 protein sequence Red =Cloning site Green =Tags(s)
	MRTPGPLPVLLLLLAGAPAARPTPPTCYSRMRALSQEITRDFNLLQVSEPEPCVRYLPRLYLDIHNYCV LDKLRDFVASPPCWKVAQVDSLKDKARKLYTIMNSFCRRDLVFLDDCNALEYPIPVTTVLPDRQR
	TR TRPLEQKLISEEDLAANDILDYKDDDDKV
Tag:	C-Myc/DDK
Predicted MW:	15.4 kDa
Concentration:	>0.05 µg/µL as determined by microplate BCA method
Purity:	> 80% as determined by SDS-PAGE and Coomassie blue staining
Buffer:	25 mM Tris-HCl, 100 mM glycine, pH 7.3, 10% glycerol
Bioactivity:	Cell treatment (PMID: 28244648)
Preparation:	Recombinant protein was captured through anti-DDK affinity column followed by conventional chromatography steps.
Note:	For testing in cell culture applications, please filter before use. Note that you may experience some loss of protein during the filtration process.
Storage:	Store at -80°C.
Stability:	Stable for 12 months from the date of receipt of the product under proper storage and handling conditions. Avoid repeated freeze-thaw cycles.
RefSeq:	NP_061129
Locus ID:	54360
UniProt ID:	Q9NRR1
RefSeq Size:	1019



[View online »](#)

Cytogenetics: 4p16.2

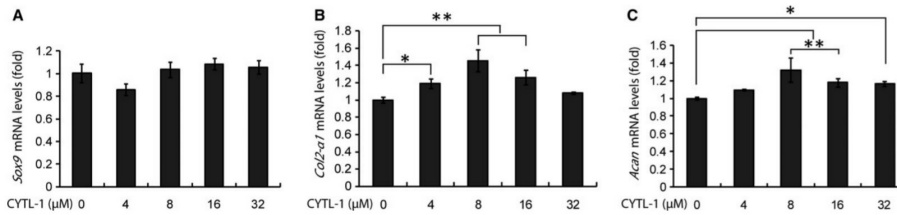
RefSeq ORF: 408

Synonyms: C4orf4; C17

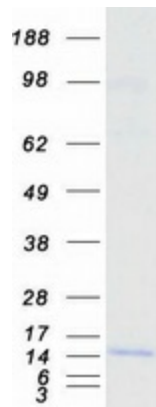
Summary: C17 is a cytokine-like protein specifically expressed in bone marrow and cord blood mononuclear cells that bear the CD34 (MIM 142230) surface marker (Liu et al., 2000 [PubMed 10857752]).[supplied by OMIM, Mar 2008]

Protein Families: Druggable Genome, Secreted Protein

Product images:



Regulatory action of CYTL-1 protein on the gene expression of Sox9, Col2-a1, and Acan in cultured chondrocytes. Cells were grown in DMEM-F12 medium containing serially-diluted CYTL-1 protein (OriGene [TP306778]) and used in cDNA template synthesis for qRT-PCR analyses. The house-keeping gene GAPDH served as an internal reference. * P < 0.05; ** P < 0.01. Figure cited from J Cell Mol Med, PMID: 28244648



Coomassie blue staining of purified CYTL1 protein (Cat# [TP306778]). The protein was produced from HEK293T cells transfected with CYTL1 cDNA clone (Cat# [RC206778]) using MegaTran 2.0 (Cat# [TT210002]).