

## Product datasheet for **TP306763**

### AMDHD1 (NM\_152435) Human Recombinant Protein

#### Product data:

Product Type:	Recombinant Proteins
Description:	Recombinant protein of human amidohydrolase domain containing 1 (AMDHD1), 20 µg
Species:	Human
Expression Host:	HEK293T
Expression cDNA Clone or AA Sequence:	>RC206763 protein sequence <b>Red</b> =Cloning site <b>Green</b> =Tags(s)

MAGGHSLLLENAQQVWLCARGERFLARDALRSLAVLEGASLVGKDGFIKAIGPADVIQRQFSGETFEE  
IIDCSGKCILPGLVDAHTHPWAGERVHEFAMKLAGATYMEIHQAGGGIHFTVERTRQATEEELFRSLQQ  
RLQCMMRAGTTLVECKSGYGLDLETTELKMLRVIERARRELDIGISATYCGAHSVPKPKGTATEAADDIINN  
HLPKLELGRNGEIHVDNIDVFCEKGVFDLDSTRRILQRGKDIGLQINFHGDELHPMKAELGAELGAQA  
ISHLEEVSDEGIVAMATARCSAILLPTTAYMLRLKQPRARKMLDEGVIVALGSDFNPNAYCFSMPMVMHL  
ACVNMRMSMPEALAAATINAAYALGKSHTHGSLEVGKQGDIIINSSRWEHLIYQFGGHHELIEYVIKAG  
KLIYKT

**TRTRPLEQKLISEEDLAANDILDYKDDDDKV**

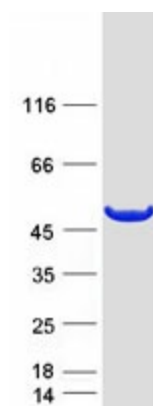
Tag:	C-Myc/DDK
Predicted MW:	46.6 kDa
Concentration:	>0.05 µg/µL as determined by microplate BCA method
Purity:	> 80% as determined by SDS-PAGE and Coomassie blue staining
Buffer:	25 mM Tris-HCl, 100 mM glycine, pH 7.3, 10% glycerol
Preparation:	Recombinant protein was captured through anti-DDK affinity column followed by conventional chromatography steps.
Note:	For testing in cell culture applications, please filter before use. Note that you may experience some loss of protein during the filtration process.
Storage:	Store at -80°C.
Stability:	Stable for 12 months from the date of receipt of the product under proper storage and handling conditions. Avoid repeated freeze-thaw cycles.
RefSeq:	<u><a href="#">NP_689648</a></u>



[View online »](#)

Locus ID:	144193
UniProt ID:	<a href="#">Q96NU7</a> , <a href="#">B3KVC5</a>
RefSeq Size:	2143
Cytogenetics:	12q23.1
RefSeq ORF:	1278
Synonyms:	HMFT1272
Protein Pathways:	Histidine metabolism, Metabolic pathways

### Product images:



Coomassie blue staining of purified AMDHD1 protein (Cat# TP306763). The protein was produced from HEK293T cells transfected with AMDHD1 cDNA clone (Cat# [RC206763]) using MegaTran 2.0 (Cat# [TT210002]).