

## Product datasheet for TP306743L

### CCDC17 (NM\_152500) Human Recombinant Protein

#### Product data:

**Product Type:** Recombinant Proteins

**Description:** Recombinant protein of human coiled-coil domain containing 17 (CCDC17), 1 mg

**Species:** Human

**Expression Host:** HEK293T

**Expression cDNA Clone or AA Sequence:** >RC206743 protein sequence  
Red=Cloning site Green=Tags(s)

MSRLFGLEQEIRELQAEAGRTRGALEVLGARIQELQAEPGNPLSSRREAELYSPVQKANPGTLAAEIRAL  
REAYIRDGGRDPGVLGQIWQLQVEASALELQRSQTRRGRAGATSGELPVVEAENRRLEAEILALQMQRGR  
APLGPQDLRLLGDASLQPKGRRDPLLPPVAPPLPPLPGFSEPLPGTMRNLGLDSHFLLPTSDMLGP  
APYDPGAGLVIFYDFLRGLEASWIWVQERTASAHAARDTGRTTALPPALFLPPPAPGPMNSNCAILASRQ  
PVPRLPPSSSVSLVCELQVWQGLAWARAPQPKAWVSLGLFDQDQRVLSGRWRLPLRALPLDPSLSLGLQLN  
GIPQAGQAEFLRLVNARDAAVQTLAEINPASVHEYQYPPPVSSSTSSLEASFLTPAVGFADPPPRTTEEPL  
SGVKDRDEGLGPHHSFDLPPVSF

TRTRPLEQKLISEEDLAANDILDYKDDDDKV

**Tag:** C-Myc/DDK

**Predicted MW:** 48.3

**Concentration:** >0.05 µg/µL as determined by microplate BCA method

**Purity:** > 80% as determined by SDS-PAGE and Coomassie blue staining

**Buffer:** 25 mM Tris-HCl, 100 mM glycine, pH 7.3, 10% glycerol

**Preparation:** Recombinant protein was captured through anti-DDK affinity column followed by conventional chromatography steps.

**Note:** For testing in cell culture applications, please filter before use. Note that you may experience some loss of protein during the filtration process.

**Storage:** Store at -80°C.

**Stability:** Stable for 12 months from the date of receipt of the product under proper storage and handling conditions. Avoid repeated freeze-thaw cycles.

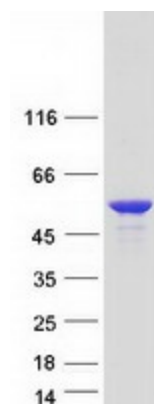
**RefSeq:** [NP\\_689713](#)



[View online »](#)

Locus ID:	149483
UniProt ID:	<a href="#">Q96LX7</a>
RefSeq Size:	1914
Cytogenetics:	1p34.1
RefSeq ORF:	1329
Synonyms:	coiled-coil domain containing 17; FLJ17921; FLJ33084; FLJ33084, RP4-697E16.4; OTTHUMP00000009506

### Product images:



Coomassie blue staining of purified CCDC17 protein (Cat# [TP306743]). The protein was produced from HEK293T cells transfected with CCDC17 cDNA clone (Cat# [RC206743]) using MegaTran 2.0 (Cat# [TT210002]).