

## Product datasheet for **TP306743**

### CCDC17 (NM\_152500) Human Recombinant Protein

#### Product data:

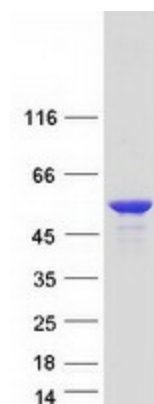
Product Type:	Recombinant Proteins
Description:	Recombinant protein of human coiled-coil domain containing 17 (CCDC17), 20 µg
Species:	Human
Expression Host:	HEK293T
Expression cDNA Clone or AA Sequence:	>RC206743 protein sequence <b>Red</b> =Cloning site <b>Green</b> =Tags(s)
	<p>MSRLFGLEQEIRELQAEAGRTRGALEVLGARIQELQAEPGNPLSSRREAELYSPVQKANPGTLAAEIRAL REAYIRDGGRDPGVLGQIWQLQVEASALELQRSQTRRGRAGATSGELPVEAENRRLEAEILALQMQRGR APLGPQDLRLLGDASLQPKGRRDPLLPPPVAPPLPPLPGFSEPLPGTMRNLGLDSHFLLPTSDMLGP APYDPGAGLVIFYDFLRGLEASWIWVQERTASAHAARDTGRITLPPALFLPPPPAGPMSNCAILASRQ PVPRLPPSSSVSLVCELQVWQGLAWARAPQPKAWVSLGLFDQDQRVLSGRWRLPLRALPLDPSLSLGLQLN GIPQAGQAEFLRLVNARDAAVQTLAEINPASVHEYQYPPPVSSSTSSLEASFLTPAVGFADPPPRTTEEPL SGVKDRDEGLGPHHSFDLPPVSF</p> <p><b>TRTRPLEQKLISEEDLAANDILDYKDDDDKV</b></p>
Tag:	C-Myc/DDK
Predicted MW:	48.3
Concentration:	>0.05 µg/µL as determined by microplate BCA method
Purity:	> 80% as determined by SDS-PAGE and Coomassie blue staining
Buffer:	25 mM Tris-HCl, 100 mM glycine, pH 7.3, 10% glycerol
Preparation:	Recombinant protein was captured through anti-DDK affinity column followed by conventional chromatography steps.
Note:	For testing in cell culture applications, please filter before use. Note that you may experience some loss of protein during the filtration process.
Storage:	Store at -80°C.
Stability:	Stable for 12 months from the date of receipt of the product under proper storage and handling conditions. Avoid repeated freeze-thaw cycles.
RefSeq:	<u><a href="#">NP_689713</a></u>



[View online »](#)

Locus ID:	149483
UniProt ID:	<a href="#">Q96LX7</a>
RefSeq Size:	1914
Cytogenetics:	1p34.1
RefSeq ORF:	1329
Synonyms:	coiled-coil domain containing 17; FLJ17921; FLJ33084; FLJ33084, RP4-697E16.4; OTTHUMP00000009506

### Product images:



Coomassie blue staining of purified CCDC17 protein (Cat# TP306743). The protein was produced from HEK293T cells transfected with CCDC17 cDNA clone (Cat# [RC206743]) using MegaTran 2.0 (Cat# [TT210002]).