

Product datasheet for TP306735M

IGSF11 (NM_152538) Human Recombinant Protein

Product data:

| | |
|---------------------------------------|---|
| Product Type: | Recombinant Proteins |
| Description: | Recombinant protein of human immunoglobulin superfamily, member 11 (IGSF11), transcript variant 1, 100 µg |
| Species: | Human |
| Expression Host: | HEK293T |
| Expression cDNA Clone or AA Sequence: | >RC206735 protein sequence Red =Cloning site Green =Tags(s) |

MSLVELLWVWNCFSRTGVAASLEVSESPGSIQVARGQTAVLPCTFTTSAALINLNVIWMVTPLSNANQPE
QVILYQGGQMFDGAPRFHGRVGFGTMPATNVSIFINNTQLSDTGTYQCLVNNLPDIGGRNIGVTGLTVL
VPPSAPHCQIQGSQDIGSDVILLCSSEEGIPRPTYLWEKLDNTLKLPTATQDQVQGTVTIRNISALSSG
LYQCVASNAIGTSTCLLDLQVISQPARNIGLIAGAIGTGAVIIIFCIALILGAFFYWRSKNKEEEEEIIP
NEIREDDLPPKCSSAKAFHTEISSDNNTLTSSNAYNSRYWSNNPKVHRNTESVSHFSDLGQSFSEHSGN
ANIPSIYANGTHLVPGQHKLVTANRGSSPQVMSRNSGVSRSRKP RPPHTSHYSYATLHATLERIGAVPVMV
PAQSRAGSLV

TRTRPLEQKLISEEDLAANDILDYKDDDDKV

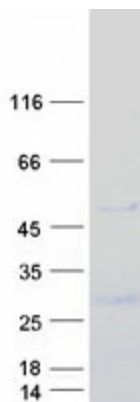
| | |
|----------------|--|
| Tag: | C-Myc/DDK |
| Predicted MW: | 46.1 kDa |
| Concentration: | >0.05 µg/µL as determined by microplate BCA method |
| Purity: | > 80% as determined by SDS-PAGE and Coomassie blue staining |
| Buffer: | 25 mM Tris-HCl, 100 mM glycine, pH 7.3, 10% glycerol |
| Preparation: | Recombinant protein was captured through anti-DDK affinity column followed by conventional chromatography steps. |
| Note: | For testing in cell culture applications, please filter before use. Note that you may experience some loss of protein during the filtration process. |
| Storage: | Store at -80°C. |
| Stability: | Stable for 12 months from the date of receipt of the product under proper storage and handling conditions. Avoid repeated freeze-thaw cycles. |



[View online »](#)

| | |
|-------------------|---|
| RefSeq: | <u>NP_689751</u> |
| Locus ID: | 152404 |
| UniProt ID: | <u>Q5DX21</u> |
| RefSeq Size: | 3577 |
| Cytogenetics: | 3q13.32 |
| RefSeq ORF: | 1290 |
| Synonyms: | BT-IgSF; CT119; CXADRL1; Igsf13; VSIG3 |
| Summary: | IGSF11 is an immunoglobulin (Ig) superfamily member that is preferentially expressed in brain and testis. It shares significant homology with coxsackievirus and adenovirus receptor (CXADR; MIM 602621) and endothelial cell-selective adhesion molecule (ESAM).[supplied by OMIM, Apr 2005] |
| Protein Families: | Transmembrane |

Product images:



Coomassie blue staining of purified IGSF11 protein (Cat# [TP306735]). The protein was produced from HEK293T cells transfected with IGSF11 cDNA clone (Cat# [RC206735]) using MegaTran 2.0 (Cat# [TT210002]).