

Product datasheet for TP306733

LYSMD1 (NM_212551) Human Recombinant Protein

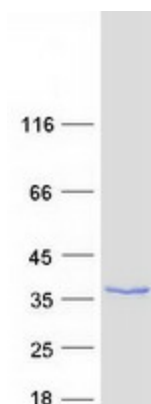
Product data:

Product Type:	Recombinant Proteins
Description:	Recombinant protein of human LysM, putative peptidoglycan-binding, domain containing 1 (LYSMD1), transcript variant 1, 20 µg
Species:	Human
Expression Host:	HEK293T
Expression cDNA Clone or AA Sequence:	>RC206733 protein sequence Red =Cloning site Green =Tags(s)
	MASPSRQPPPGGSGLLQGSRRARSYGSLSVQSACSPVRRERLEHQLEPGDTLAGLALKYGVTMEQIKRANRL YTNDISIFLKKTLYIPILTEPRDLFNGLDSEEEKDGEEKVHPSNSEVWPHSTERKKQETGAGRANGEVLPT PGQETPTPIHDLASDFLKKLDSQISLSKAAAQKLKKGENGVPGEDAGLHLSSPWMQQRVPLGPVPLTR TSRTRTLRDQEDEFK
	TRTRPLEQKLISEEDLAANDILDYKDDDDKV
Tag:	C-Myc/DDK
Predicted MW:	24.8 kDa
Concentration:	>0.05 µg/µL as determined by microplate BCA method
Purity:	> 80% as determined by SDS-PAGE and Coomassie blue staining
Buffer:	25 mM Tris-HCl, 100 mM glycine, pH 7.3, 10% glycerol
Preparation:	Recombinant protein was captured through anti-DDK affinity column followed by conventional chromatography steps.
Note:	For testing in cell culture applications, please filter before use. Note that you may experience some loss of protein during the filtration process.
Storage:	Store at -80°C.
Stability:	Stable for 12 months from the date of receipt of the product under proper storage and handling conditions. Avoid repeated freeze-thaw cycles.
RefSeq:	<u>NP_997716</u>
Locus ID:	388695



[View online »](#)

UniProt ID:	<u>Q96S90</u>
RefSeq Size:	2649
Cytogenetics:	1q21.3
RefSeq ORF:	681
Synonyms:	SB145

Product images:

Coomassie blue staining of purified LYSMD1 protein (Cat# TP306733). The protein was produced from HEK293T cells transfected with LYSMD1 cDNA clone (Cat# [RC206733]) using MegaTran 2.0 (Cat# [TT210002]).