

Product datasheet for TP306721L

LOC389458 (NM_203393) Human Recombinant Protein

Product data:

Product Type:	Recombinant Proteins
Description:	Recombinant protein of human hypothetical gene supported by BC031661 (LOC389458), 1 mg
Species:	Human
Expression Host:	HEK293T
Expression cDNA Clone or AA Sequence:	>RC206721 representing NM_203393 Red =Cloning site Green =Tags(s) MLTPRKSFRTCSKASGLAETESCGQHTHTWPRALAVLMGLWWPRDQKAGEEDLRFRRERPGLQATATGSG E HGAFPVHSQGVWASTHWQGTAVCPLQTPPPDAFIRNNKVLS TR TRPLEQKLISEEDLAANDILDYKDDDDKV
Tag:	C-Myc/DDK
Predicted MW:	12.7
Concentration:	>0.05 µg/µL as determined by microplate BCA method
Purity:	> 80% as determined by SDS-PAGE and Coomassie blue staining
Buffer:	25 mM Tris-HCl, 100 mM glycine, pH 7.3, 10% glycerol
Preparation:	Recombinant protein was captured through anti-DDK affinity column followed by conventional chromatography steps.
Note:	For testing in cell culture applications, please filter before use. Note that you may experience some loss of protein during the filtration process.
Storage:	Store at -80°C.
Stability:	Stable for 12 months from the date of receipt of the product under proper storage and handling conditions. Avoid repeated freeze-thaw cycles.
RefSeq:	<u>NP_976327</u>
Locus ID:	389458
RefSeq Size:	544

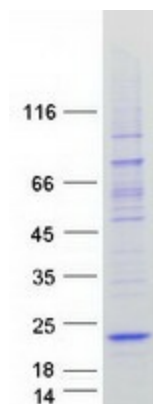

[View online »](#)

Cytogenetics: 7p22.1

RefSeq ORF: 333

Synonyms: MGC:35170

Product images:



Coomassie blue staining of purified LOC389458 protein (Cat# [TP306721]). The protein was produced from HEK293T cells transfected with LOC389458 cDNA clone (Cat# [RC206721]) using MegaTran 2.0 (Cat# [TT210002]).