

Product datasheet for **TP306694L**

TRY1 (PRSS58) (NM_001001317) Human Recombinant Protein

Product data:

Product Type: Recombinant Proteins

Description: Recombinant protein of human trypsin X3 (TRYX3), 1 mg

Species: Human

Expression Host: HEK293T

Expression cDNA Clone
or AA Sequence: >RC206694 protein sequence
Red=Cloning site Green=Tags(s)

MKFILLWALLNLTVALAFNPDYTVSSTPPYLVLKSDYLPACAGVLIHPLWVITAAHCNLPKLRVILGVTI
PADSNEKHLQVIGYEKMIHHPHFSVTSIDHDIMLIKLTAEELNDYVVKLANLPYQTISENTMCSVSTWSY
NVCDIYKEPDSLQTVNISVISKPQCRDAYKTYNITENMLCVGIVPGRRQPCKEVSAAAPICNGMLQGILS
FADGCVLRADVGIYAKIFYIYIPWIENVIQNN

TRTRPLEQKLISEEDLAANDILDYKDDDDKV

Tag: C-Myc/DDK

Predicted MW: 26.9 kDa

Concentration: >0.05 µg/µL as determined by microplate BCA method

Purity: > 80% as determined by SDS-PAGE and Coomassie blue staining

Buffer: 25 mM Tris-HCl, 100 mM glycine, pH 7.3, 10% glycerol

Preparation: Recombinant protein was captured through anti-DDK affinity column followed by conventional chromatography steps.

Note: For testing in cell culture applications, please filter before use. Note that you may experience some loss of protein during the filtration process.

Storage: Store at -80°C.

Stability: Stable for 12 months from the date of receipt of the product under proper storage and handling conditions. Avoid repeated freeze-thaw cycles.

RefSeq: [NP_001001317](#)

Locus ID: 136541

UniProt ID: [Q8IYP2](#)



[View online »](#)

RefSeq Size: 923

Cytogenetics: 7q34

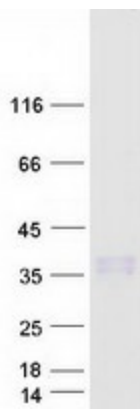
RefSeq ORF: 723

Synonyms: PRSS1; TRY1; TRYX3; UNQ2540

Summary: This gene encodes a member of the trypsin family of serine proteases. This gene and several related trypsinogen genes are localized to the T cell receptor beta locus on chromosome 7. This gene was previously described as a trypsinogen-like pseudogene, but it is now thought to be a protein-coding gene. [provided by RefSeq, Jul 2008]

Protein Families: Druggable Genome

Product images:



Coomassie blue staining of purified PRSS58 protein (Cat# [TP306694]). The protein was produced from HEK293T cells transfected with PRSS58 cDNA clone (Cat# [RC206694]) using MegaTran 2.0 (Cat# [TT210002]).