

Product datasheet for **TP306683M**

ERP27 (NM_152321) Human Recombinant Protein

Product data:

Product Type: Recombinant Proteins

Description: Recombinant protein of human endoplasmic reticulum protein 27 (ERP27), 100 µg

Species: Human

Expression Host: HEK293T

**Expression cDNA Clone
or AA Sequence:** >RC206683 protein sequence
Red=Cloning site **Green**=Tags(s)

MEAAPSRFMFLFLLTCELAEEVAAEVEKSSDGPAAQEPTWLTDVPAAMEFIAATEVAVIGFFQDLEIP
AVPILHSMVQKFPGVSGISTDSEVLTHYNITGNTICLFRDVDNEQLNLEDEDIESIDATKLSRFEINS
LHMVTEYNPVTVIGLFNSVIQIHLIMNKASPEYEENMHRYQKAALFQGKILFILDVSGMKENGKVIS
FFKLKESQLPALAIYQTLDDDEWDTLPTAEVSVEHVQNFCDFLSGKLLKENRESEGKTPKVEL

TRTRPLEQKLISEEDLAANDILDYKDDDDKV

Tag: C-Myc/DDK

Predicted MW: 30.3 kDa

Concentration: >0.05 µg/µL as determined by microplate BCA method

Purity: > 80% as determined by SDS-PAGE and Coomassie blue staining

Buffer: 25 mM Tris-HCl, 100 mM glycine, pH 7.3, 10% glycerol

Preparation: Recombinant protein was captured through anti-DDK affinity column followed by conventional chromatography steps.

Note: For testing in cell culture applications, please filter before use. Note that you may experience some loss of protein during the filtration process.

Storage: Store at -80°C.

Stability: Stable for 12 months from the date of receipt of the product under proper storage and handling conditions. Avoid repeated freeze-thaw cycles.

RefSeq: [NP_689534](#)

Locus ID: 121506

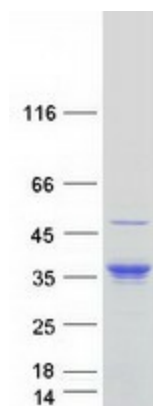
UniProt ID: [Q96DN0](#)



[View online »](#)

RefSeq Size:	1581
Cytogenetics:	12p12.3
RefSeq ORF:	819
Synonyms:	C12orf46; PDIA8
Summary:	<p>This gene encodes a noncatalytic member of the protein disulfide isomerase (PDI) family of endoplasmic reticulum (ER) proteins. The canonical protein has an N-terminal signal sequence, two thioredoxin (TRX)-like domains and a C-terminal ER-retention sequence. Alternative splicing results in multiple transcript variants encoding distinct isoforms; some of which lack domains present in the canonical protein. [provided by RefSeq, Dec 2016]</p>

Product images:



Coomassie blue staining of purified ERP27 protein (Cat# [TP306683]). The protein was produced from HEK293T cells transfected with ERP27 cDNA clone (Cat# [RC206683]) using MegaTran 2.0 (Cat# [TT210002]).