

## Product datasheet for **TP306676M**

### Secretory lectin ZG16 (ZG16) (NM\_152338) Human Recombinant Protein

#### Product data:

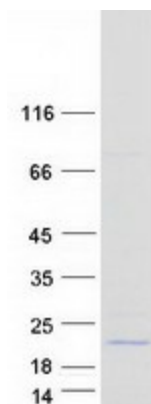
Product Type:	Recombinant Proteins
Description:	Recombinant protein of human zymogen granule protein 16 homolog (rat) (ZG16), 100 µg
Species:	Human
Expression Host:	HEK293T
Expression cDNA Clone or AA Sequence:	>RC206676 protein sequence <b>Red</b> =Cloning site <b>Green</b> =Tags(s)
	MLTVALLALLCASASGNAIQARSSSYSGEYGGGGKRFSHSGNQLDGPITALRVRVNTYYIVGLQVRYGK VWSDYVGGRRNGDLEEIFLHPGESVIQVSGKYKWYLKLVFVTDKGRYLSFGKDSGTSFNAVPLHPNTVLR FISGRSGSLIDAIGLHWDVYPTSCSRC
	<b>TRTRPLEQKLISEEDLAANDILDYKDDDDKV</b>
Tag:	C-Myc/DDK
Predicted MW:	18 kDa
Concentration:	>0.05 µg/µL as determined by microplate BCA method
Purity:	> 80% as determined by SDS-PAGE and Coomassie blue staining
Buffer:	25 mM Tris-HCl, 100 mM glycine, pH 7.3, 10% glycerol
Preparation:	Recombinant protein was captured through anti-DDK affinity column followed by conventional chromatography steps.
Note:	For testing in cell culture applications, please filter before use. Note that you may experience some loss of protein during the filtration process.
Storage:	Store at -80°C.
Stability:	Stable for 12 months from the date of receipt of the product under proper storage and handling conditions. Avoid repeated freeze-thaw cycles.
RefSeq:	<a href="#">NP_689551</a>
Locus ID:	653808
UniProt ID:	<a href="#">O60844</a>
RefSeq Size:	1806



[View online »](#)

Cytogenetics:	16p11.2
RefSeq ORF:	501
Synonyms:	JCLN; JCLN1; ZG16A
Summary:	May play a role in protein trafficking. May act as a linker molecule between the submembranous matrix on the luminal side of zymogen granule membrane (ZGM) and aggregated secretory proteins during granule formation in the TGN.[UniProtKB/Swiss-Prot Function]

### Product images:



Coomassie blue staining of purified ZG16 protein (Cat# [TP306676]). The protein was produced from HEK293T cells transfected with ZG16 cDNA clone (Cat# [RC206676]) using MegaTran 2.0 (Cat# [TT210002]).