

Product datasheet for **TP306676**

Secretory lectin ZG16 (ZG16) (NM_152338) Human Recombinant Protein

Product data:

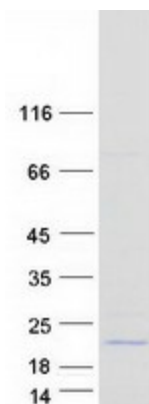
| | |
|---------------------------------------|--|
| Product Type: | Recombinant Proteins |
| Description: | Recombinant protein of human zymogen granule protein 16 homolog (rat) (ZG16), 20 µg |
| Species: | Human |
| Expression Host: | HEK293T |
| Expression cDNA Clone or AA Sequence: | >RC206676 protein sequence Red =Cloning site Green =Tags(s) |
| | MLTVALLALLCASASGNAIQARSSSYSGEYGGGGKRFSHSGNQLDGPITALRVRVNTYYIVGLQVRYGK VWSDYVGGRRNGDLEEIFLHPGESVIQVSGKYKWYLKLVFVTDKGRYLSFGKDSGTSFNAVPLHPNTVLR FISGRSGSLIDAIGLHWDVYPTSCSRC TRTRPLEQKLISEEDLAANDILDYKDDDDKV |
| Tag: | C-Myc/DDK |
| Predicted MW: | 18 kDa |
| Concentration: | >0.05 µg/µL as determined by microplate BCA method |
| Purity: | > 80% as determined by SDS-PAGE and Coomassie blue staining |
| Buffer: | 25 mM Tris-HCl, 100 mM glycine, pH 7.3, 10% glycerol |
| Preparation: | Recombinant protein was captured through anti-DDK affinity column followed by conventional chromatography steps. |
| Note: | For testing in cell culture applications, please filter before use. Note that you may experience some loss of protein during the filtration process. |
| Storage: | Store at -80°C. |
| Stability: | Stable for 12 months from the date of receipt of the product under proper storage and handling conditions. Avoid repeated freeze-thaw cycles. |
| RefSeq: | NP_689551 |
| Locus ID: | 653808 |
| UniProt ID: | O60844 |
| RefSeq Size: | 1806 |



[View online »](#)

| | |
|---------------|---|
| Cytogenetics: | 16p11.2 |
| RefSeq ORF: | 501 |
| Synonyms: | JCLN; JCLN1; ZG16A |
| Summary: | May play a role in protein trafficking. May act as a linker molecule between the submembranous matrix on the luminal side of zymogen granule membrane (ZGM) and aggregated secretory proteins during granule formation in the TGN.[UniProtKB/Swiss-Prot Function] |

Product images:



Coomassie blue staining of purified ZG16 protein (Cat# TP306676). The protein was produced from HEK293T cells transfected with ZG16 cDNA clone (Cat# [RC206676]) using MegaTran 2.0 (Cat# [TT210002]).