

Product datasheet for **TP306673**

STK22C (TSSK3) (NM_052841) Human Recombinant Protein

Product data:

Product Type: Recombinant Proteins

Description: Recombinant protein of human testis-specific serine kinase 3 (TSSK3), 20 µg

Species: Human

Expression Host: HEK293T

Expression cDNA Clone or AA Sequence: >RC206673 representing NM_052841

Red=Cloning site Green=Tags(s)

MEDFLLSNGYQLGKTIGEGTYSKVKEAFSKKHQRKVAIKVIDKMGGPEEFIQRFLPRELQIVRTL D HKNI
IQVYEMLESADGKICLVMELAEAGGDVFDVLCVNGGPLPESRAKALFRQMVEAIRYCHGCGVAHRDLKCENA
LLQG FN LKLTDFGFAKVLPKSHRELSQTF CGSTAYAAPEVLQGI PHDSKKG DVWSMGVWLVYMLCASLPF
DDTDIPKMLWQQQKGVSFPTHLSISADCQDLLKRLLEPDMILRPSIEEVS WHPWLAST

TRTRPLEQKLISEEDLAANDILDYKDDDDKV

Tag: C-Myc/DDK

Predicted MW: 29.9 kDa

Concentration: >0.05 µg/µL as determined by microplate BCA method

Purity: > 80% as determined by SDS-PAGE and Coomassie blue staining

Buffer: 25 mM Tris-HCl, 100 mM glycine, pH 7.3, 10% glycerol

Preparation: Recombinant protein was captured through anti-DDK affinity column followed by conventional chromatography steps.

Note: For testing in cell culture applications, please filter before use. Note that you may experience some loss of protein during the filtration process.

Storage: Store at -80°C.

Stability: Stable for 12 months from the date of receipt of the product under proper storage and handling conditions. Avoid repeated freeze-thaw cycles.

RefSeq: [NP_443073](#)

Locus ID: 81629

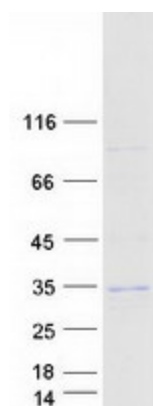
UniProt ID: [Q96PN8](#)



[View online »](#)

RefSeq Size:	1330
Cytogenetics:	1p35.1
RefSeq ORF:	804
Synonyms:	SPOGA3; STK22C; STK22D; TSK3
Summary:	This gene encodes a kinase expressed exclusively in the testis that is thought to play a role in either germ cell differentiation or mature sperm function. [provided by RefSeq, Jul 2008]
Protein Families:	Druggable Genome, Protein Kinase

Product images:



Coomassie blue staining of purified TSSK3 protein (Cat# TP306673). The protein was produced from HEK293T cells transfected with TSSK3 cDNA clone (Cat# [RC206673]) using MegaTran 2.0 (Cat# [TT210002]).