

Product datasheet for **TP306671M**

IZUMO1 (NM_182575) Human Recombinant Protein

Product data:

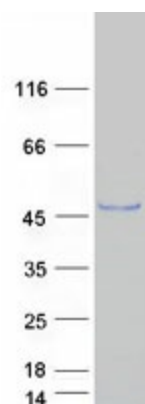
Product Type:	Recombinant Proteins
Description:	Recombinant protein of human izumo sperm-egg fusion 1 (IZUMO1), 100 µg
Species:	Human
Expression Host:	HEK293T
Expression cDNA Clone or AA Sequence:	>RC206671 protein sequence Red =Cloning site Green =Tags(s)
	<p>MGPHTLLCAALAGCLLPAEGCVICDPSVVLALKSLEKDYLPGHLDKHHKAMMERVENAVKDFQELSLN EDAYMGVDEATLQKGSWSLLKDLKRITSDVKGDLFVKELFWMLHLQKETFATYVARFQKEAYCPNKCG VMLQTLIWCKNCKKEVHACRKS YDCGERNVEVPQMEDMILDCELNWHQASEGLTDYSFYRVWGNNTETLV SKGKEATLTKPMVGPEDAGSYRCELGSVNSSPATIINFHVTVLPKMIKEEKPSNIVTPGEATTESSISL QPLQPEKMLASRLGLLIGSLALITGLTFAIFRRRKVIDFIKSSLFGLGSGVAEQTQVPKEKATDSRQQ</p> <p>TRTRPLEQKLISEEDLAANDILDYKDDDDKV</p>
Tag:	C-Myc/DDK
Predicted MW:	38.7 kDa
Concentration:	>0.05 µg/µL as determined by microplate BCA method
Purity:	> 80% as determined by SDS-PAGE and Coomassie blue staining
Buffer:	25 mM Tris-HCl, 100 mM glycine, pH 7.3, 10% glycerol
Preparation:	Recombinant protein was captured through anti-DDK affinity column followed by conventional chromatography steps.
Note:	For testing in cell culture applications, please filter before use. Note that you may experience some loss of protein during the filtration process.
Storage:	Store at -80°C.
Stability:	Stable for 12 months from the date of receipt of the product under proper storage and handling conditions. Avoid repeated freeze-thaw cycles.
RefSeq:	<u>NP_872381</u>
Locus ID:	284359



[View online »](#)

UniProt ID:	Q8IYV9
RefSeq Size:	1621
Cytogenetics:	19q13.33
RefSeq ORF:	1050
Synonyms:	IZUMO; OBF
Summary:	The sperm-specific protein Izumo, named for a Japanese shrine dedicated to marriage, is essential for sperm-egg plasma membrane binding and fusion (Inoue et al., 2005 [PubMed 15759005]).[supplied by OMIM, Mar 2008]
Protein Families:	Transmembrane

Product images:



Coomassie blue staining of purified IZUMO1 protein (Cat# [TP306671]). The protein was produced from HEK293T cells transfected with IZUMO1 cDNA clone (Cat# [RC206671]) using MegaTran 2.0 (Cat# [TT210002]).