

Product datasheet for **TP306671**

IZUMO1 (NM_182575) Human Recombinant Protein

Product data:

Product Type: Recombinant Proteins

Description: Recombinant protein of human izumo sperm-egg fusion 1 (IZUMO1), 20 µg

Species: Human

Expression Host: HEK293T

Expression cDNA Clone or AA Sequence: >RC206671 protein sequence
Red=Cloning site **Green**=Tags(s)

MGPHTLLCAALAGCLLPAEGCVICDPSVVLALKSLEKDYLPGHLDKHHKAMMERVENAVKDFQELSLN
EDAYMGVDEATLQKGSWSLLKDLKRITSDVKGDLFVKELFWMLHLQKETFATYVARFQKEAYCPNKCG
VMLQTLIWCKNCKKEVHACRKS YDCGERNVEVPQMEDMILDCELNWHQASEGLTDYSFYRVWGNNTETLV
SKGKEATLTKPMVGPEDAGSYRCELGSVNSSPATIINFHVTVLPKMIKEEKPSNIVTPGEATTESSISL
QPLQPEKMLASRLGLLIGSLALITGLTFAIFRRRKVIDFIKSSLFGLGSGVAEQTVPKKATDSRQQ

TRTRPLEQKLISEEDLAANDILDYKDDDDKV

Tag: C-Myc/DDK

Predicted MW: 38.7 kDa

Concentration: >0.05 µg/µL as determined by microplate BCA method

Purity: > 80% as determined by SDS-PAGE and Coomassie blue staining

Buffer: 25 mM Tris-HCl, 100 mM glycine, pH 7.3, 10% glycerol

Preparation: Recombinant protein was captured through anti-DDK affinity column followed by conventional chromatography steps.

Note: For testing in cell culture applications, please filter before use. Note that you may experience some loss of protein during the filtration process.

Storage: Store at -80°C.

Stability: Stable for 12 months from the date of receipt of the product under proper storage and handling conditions. Avoid repeated freeze-thaw cycles.

RefSeq: [NP_872381](#)

Locus ID: 284359



[View online »](#)

UniProt ID: [Q8IYV9](#)

RefSeq Size: 1621

Cytogenetics: 19q13.33

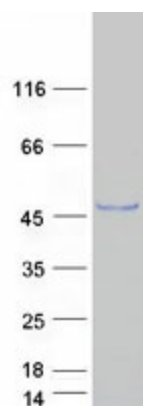
RefSeq ORF: 1050

Synonyms: IZUMO; OBF

Summary: The sperm-specific protein Izumo, named for a Japanese shrine dedicated to marriage, is essential for sperm-egg plasma membrane binding and fusion (Inoue et al., 2005 [PubMed 15759005]).[supplied by OMIM, Mar 2008]

Protein Families: Transmembrane

Product images:



Coomassie blue staining of purified IZUMO1 protein (Cat# TP306671). The protein was produced from HEK293T cells transfected with IZUMO1 cDNA clone (Cat# [RC206671]) using MegaTran 2.0 (Cat# [TT210002]).