

Product datasheet for **TP306668L**

RTL6 (NM_032287) Human Recombinant Protein

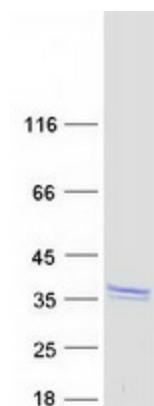
Product data:

Product Type:	Recombinant Proteins
Description:	Recombinant protein of human leucine zipper, down-regulated in cancer 1-like (LDOC1L), 1 mg
Species:	Human
Expression Host:	HEK293T
Expression cDNA Clone or AA Sequence:	>RC206668 protein sequence Red =Cloning site Green =Tags(s)
	<p>MVQPQTSKAESPALAASPNAQMDDVIDTLTSLRLTNSALRREASTLRAEKANLTNMLESVMAELTLLRTR ARIPGALQITPPISITSNGTRPMTTPPTSLPEPFGDPGRLAGFLMQMDRFMIFQASRFPGEAERVAFL VSRLTGAEKWAIPHMQPDSPLRNYYQGFLAELRRYKSPLRHARRAQIRKTSASNRAVRERQMLCRQLA SAGTGPCPVHPASNGTSPAPALPARARNL</p> <p>TRTRPLEQKLISEEDLAANDILDYKDDDDKV</p>
Tag:	C-Myc/DDK
Predicted MW:	26 kDa
Concentration:	>0.05 µg/µL as determined by microplate BCA method
Purity:	> 80% as determined by SDS-PAGE and Coomassie blue staining
Buffer:	25 mM Tris-HCl, 100 mM glycine, pH 7.3, 10% glycerol
Preparation:	Recombinant protein was captured through anti-DDK affinity column followed by conventional chromatography steps.
Note:	For testing in cell culture applications, please filter before use. Note that you may experience some loss of protein during the filtration process.
Storage:	Store at -80°C.
Stability:	Stable for 12 months from the date of receipt of the product under proper storage and handling conditions. Avoid repeated freeze-thaw cycles.
RefSeq:	<u>NP_115663</u>
Locus ID:	84247



[View online »](#)

UniProt ID: Q6ICC9
 RefSeq Size: 5355
 Cytogenetics: 22q13.31
 RefSeq ORF: 717
 Synonyms: dj1033E15.2; LDOC1L; Mar6; Mart6; SIRH3

Product images:


Coomassie blue staining of purified RTL6 protein (Cat# [TP306668]). The protein was produced from HEK293T cells transfected with RTL6 cDNA clone (Cat# [RC206668]) using MegaTran 2.0 (Cat# [TT210002]).