

## Product datasheet for **TP306632L**

### **RABIF (NM\_002871) Human Recombinant Protein**

#### **Product data:**

**Product Type:** Recombinant Proteins

**Description:** Recombinant protein of human RAB interacting factor (RABIF), 1 mg

**Species:** Human

**Expression Host:** HEK293T

**Expression cDNA Clone  
or AA Sequence:** >RC206632 protein sequence  
**Red**=Cloning site **Green**=Tags(s)

MEPAEQPSELVSAEGRNRKAVLCQRCGSRVLQPGTALFSRRQLFLPSMRKKPALS DGSNPDGDL LQEHWL  
VEDMFIFENVGFTKDVGNIKFLVCADCEIGPIGWHLCLDDKNSFYVALERSHE

**TRTRPLEQKLISEEDLAANDILDYKDDDDKV**

**Tag:** C-Myc/DDK

**Predicted MW:** 13.7 kDa

**Concentration:** >0.05 µg/µL as determined by microplate BCA method

**Purity:** > 80% as determined by SDS-PAGE and Coomassie blue staining

**Buffer:** 25 mM Tris-HCl, 100 mM glycine, pH 7.3, 10% glycerol

**Preparation:** Recombinant protein was captured through anti-DDK affinity column followed by conventional chromatography steps.

**Note:** For testing in cell culture applications, please filter before use. Note that you may experience some loss of protein during the filtration process.

**Storage:** Store at -80°C.

**Stability:** Stable for 12 months from the date of receipt of the product under proper storage and handling conditions. Avoid repeated freeze-thaw cycles.

**RefSeq:** [NP\\_002862](#)

**Locus ID:** 5877

**UniProt ID:** [P47224](#), [Q53EV1](#)

**RefSeq Size:** 3227

**Cytogenetics:** 1q32.1



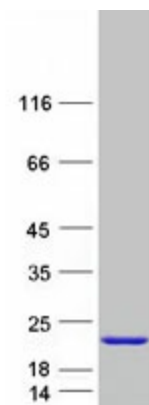
[View online »](#)

RefSeq ORF: 369

Synonyms: MSS4; RASGFR3; RASGRF3

Summary: This gene encodes a member of the SCE4/YPT1/RAB family of small GTP-binding proteins that are involved in the regulation of intracellular vesicular transport. This protein stimulates GTP-GDP exchange in SEC4, and to a lesser extent in YPT1 and RAB3A, and may play a general role in vesicular transport. [provided by RefSeq, Oct 2011]

### Product images:



Coomassie blue staining of purified RABIF protein (Cat# [TP306632]). The protein was produced from HEK293T cells transfected with RABIF cDNA clone (Cat# [RC206632]) using MegaTran 2.0 (Cat# [TT210002]).