

## Product datasheet for **TP306632**

### **RABIF (NM\_002871) Human Recombinant Protein**

#### Product data:

Product Type:	Recombinant Proteins
Description:	Recombinant protein of human RAB interacting factor (RABIF), 20 µg
Species:	Human
Expression Host:	HEK293T
Expression cDNA Clone or AA Sequence:	>RC206632 protein sequence <b>Red</b> =Cloning site <b>Green</b> =Tags(s)
	MEPAEQPSELVSAEGRNRKAVLCQRCGSRVLQPGTALFSRRQLFLPSMRKKPALS DGSNPDG DLLQEHWL VEDMFIFENVGFTKDVGNIKFLVCADCEIGPIGWHLCLDDKNSFYVALERSHE
	<b>TRTRPLEQKLISEEDLAANDILDYKDDDDKV</b>
Tag:	C-Myc/DDK
Predicted MW:	13.7 kDa
Concentration:	>0.05 µg/µL as determined by microplate BCA method
Purity:	> 80% as determined by SDS-PAGE and Coomassie blue staining
Buffer:	25 mM Tris-HCl, 100 mM glycine, pH 7.3, 10% glycerol
Preparation:	Recombinant protein was captured through anti-DDK affinity column followed by conventional chromatography steps.
Note:	For testing in cell culture applications, please filter before use. Note that you may experience some loss of protein during the filtration process.
Storage:	Store at -80°C.
Stability:	Stable for 12 months from the date of receipt of the product under proper storage and handling conditions. Avoid repeated freeze-thaw cycles.
RefSeq:	<a href="#">NP_002862</a>
Locus ID:	5877
UniProt ID:	<a href="#">P47224</a> , <a href="#">Q53EV1</a>
RefSeq Size:	3227
Cytogenetics:	1q32.1



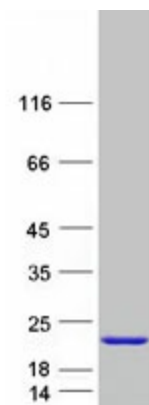
[View online »](#)

RefSeq ORF: 369

Synonyms: MSS4; RASGFR3; RASGRF3

Summary: This gene encodes a member of the SCE4/YPT1/RAB family of small GTP-binding proteins that are involved in the regulation of intracellular vesicular transport. This protein stimulates GTP-GDP exchange in SEC4, and to a lesser extent in YPT1 and RAB3A, and may play a general role in vesicular transport. [provided by RefSeq, Oct 2011]

### Product images:



Coomassie blue staining of purified RABIF protein (Cat# TP306632). The protein was produced from HEK293T cells transfected with RABIF cDNA clone (Cat# [RC206632]) using MegaTran 2.0 (Cat# [TT210002]).