

Product datasheet for **TP306628M**

Clavesin 1 (CLVS1) (NM_173519) Human Recombinant Protein

Product data:

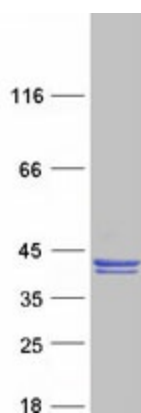
Product Type:	Recombinant Proteins
Description:	Recombinant protein of human retinaldehyde binding protein 1-like 1 (RLBP1L1), 100 µg
Species:	Human
Expression Host:	HEK293T
Expression cDNA Clone or AA Sequence:	>RC206628 protein sequence Red =Cloning site Green =Tags(s)
	MGPVSLLPKYQKLNTWNGDLAKMTHLQAGLSPETIEKARLELNENPDVLHQDIQQVRDMMITRPDIGFLR TDDAFILRFLRARKFHQADAFRLAQYFQYRQLNLD MFKNFKADDPGIKRALIDGFPGLVLENRDHYGRKI LLLFAANWDQSRNSFTDILRAILLSEVLIEDPELQINGFILIIDWSNFSFKQASKLTPSILKLAIEGLQ DSFPARFGGVHFNQWPWYIHALYTLIKPFLKDKTRKRIFLHGNNLNSLHQLIHPEFLPSEFGGTLPPYDM GTWARTLLGPDYSDENDYHTSYNAMHVKHTSSNLERECSPKLMKRSQSVEAGTLKHEEKGENENTQP L LALD
	TRTRPLEQKLISEEDLAANDILDYKDDDDKV
Tag:	C-Myc/DDK
Predicted MW:	40.6 kDa
Concentration:	>0.05 µg/µL as determined by microplate BCA method
Purity:	> 80% as determined by SDS-PAGE and Coomassie blue staining
Buffer:	25 mM Tris-HCl, 100 mM glycine, pH 7.3, 10% glycerol
Preparation:	Recombinant protein was captured through anti-DDK affinity column followed by conventional chromatography steps.
Note:	For testing in cell culture applications, please filter before use. Note that you may experience some loss of protein during the filtration process.
Storage:	Store at -80°C.
Stability:	Stable for 12 months from the date of receipt of the product under proper storage and handling conditions. Avoid repeated freeze-thaw cycles.
RefSeq:	<u>NP_775790</u>



[View online »](#)

Locus ID:	157807
UniProt ID:	Q8IUQ0
RefSeq Size:	3506
Cytogenetics:	8q12.2-q12.3
RefSeq ORF:	1062
Synonyms:	C6orf212L; CRALBPL; RLBP1L1
Summary:	Required for normal morphology of late endosomes and/or lysosomes in neurons (By similarity). Binds phosphatidylinositol 3,5-bisphosphate (PtdIns(3,5)P2).[UniProtKB/Swiss-Prot Function]

Product images:



Coomassie blue staining of purified CLVS1 protein (Cat# [TP306628]). The protein was produced from HEK293T cells transfected with CLVS1 cDNA clone (Cat# [RC206628]) using MegaTran 2.0 (Cat# [TT210002]).