

Product datasheet for TP306628

Clavesin 1 (CLVS1) (NM_173519) Human Recombinant Protein

Product data:

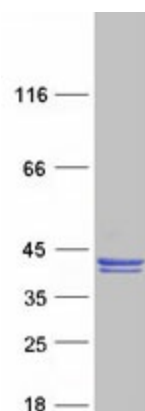
| | |
|---------------------------------------|---|
| Product Type: | Recombinant Proteins |
| Description: | Recombinant protein of human retinaldehyde binding protein 1-like 1 (RLBP1L1), 20 µg |
| Species: | Human |
| Expression Host: | HEK293T |
| Expression cDNA Clone or AA Sequence: | >RC206628 protein sequence Red =Cloning site Green =Tags(s) |
| | MGPVSLLPKYQKLNTWNGDLAKMTHLQAGLSPETIEKARLELNENPDVLHQDIQQVRDMIITRPDIGFLR TDDAFILRFLRARKFHQADAFRLLAQYFQYRQLNLDMFKNFKADDPGIKRALIDGFPGVLENRDHYGRKI LLLFAANWDQSRNSFTDILRAILLSEVLIEDPELQINGFILIDWSNFSFKQASKLTPSILKLAIEGLQ DSFPARFGGVHFNQPWYIHALYTLIKPFLKDKTRKRIFLHGNNLNSLHQLIHPEFLPSEFGGTLPPYDM GTWARTLLGPDYSDENDYHTSYNAMHVKHTSSNLERECSPKLMKRSQSVEAGTLKHEEKGENENTQPL LALD |
| | TRTRPLEQKLISEEDLAANDILDYKDDDDKV |
| Tag: | C-Myc/DDK |
| Predicted MW: | 40.6 kDa |
| Concentration: | >0.05 µg/µL as determined by microplate BCA method |
| Purity: | > 80% as determined by SDS-PAGE and Coomassie blue staining |
| Buffer: | 25 mM Tris-HCl, 100 mM glycine, pH 7.3, 10% glycerol |
| Preparation: | Recombinant protein was captured through anti-DDK affinity column followed by conventional chromatography steps. |
| Note: | For testing in cell culture applications, please filter before use. Note that you may experience some loss of protein during the filtration process. |
| Storage: | Store at -80°C. |
| Stability: | Stable for 12 months from the date of receipt of the product under proper storage and handling conditions. Avoid repeated freeze-thaw cycles. |
| RefSeq: | NP_775790 |
| Locus ID: | 157807 |



[View online »](#)

| | |
|---------------|---|
| UniProt ID: | Q8IUQ0 |
| RefSeq Size: | 3506 |
| Cytogenetics: | 8q12.2-q12.3 |
| RefSeq ORF: | 1062 |
| Synonyms: | C6orf212L; CRALBPL; RLBP1L1 |
| Summary: | Required for normal morphology of late endosomes and/or lysosomes in neurons (By similarity). Binds phosphatidylinositol 3,5-bisphosphate (PtdIns(3,5)P2).[UniProtKB/Swiss-Prot Function] |

Product images:



Coomassie blue staining of purified CLVS1 protein (Cat# TP306628). The protein was produced from HEK293T cells transfected with CLVS1 cDNA clone (Cat# [RC206628]) using MegaTran 2.0 (Cat# [TT210002]).