

Product datasheet for **TP306625L**

PHETA1 (NM_144671) Human Recombinant Protein

Product data:

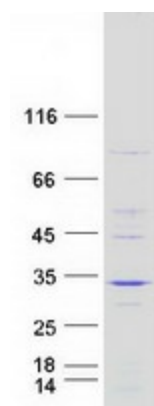
Product Type:	Recombinant Proteins
Description:	Recombinant protein of human family with sequence similarity 109, member A (FAM109A), 1 mg
Species:	Human
Expression Host:	HEK293T
Expression cDNA Clone or AA Sequence:	>RC206625 protein sequence Red =Cloning site Green =Tags(s)
	<p>MKLNERSLAFYATCDAPVDNAGFLYKKGGRHAAYHRRWVFLRGNMLFYFEDAASREPVGVILEGCTVEL VEAAEEFAFAVRFAGTRARTYVLAAESQDAMEGWVKALSRSFDYLRLLVRELEQQLAAVRGGGGMALPQ PQPQSLPLPPSLPSALAPVPSLPSAPAPVPALPLPRRPSALPPKENGCAVWSTEATFRPGPEPPPPPPRR RASAPHGPLDMPFARLHECYGQEIRALRGQWLSSRVQP</p> <p>TRTRPLEQKLISEEDLAANDILDYKDDDDKV</p>
Tag:	C-Myc/DDK
Predicted MW:	27 kDa
Concentration:	>0.05 µg/µL as determined by microplate BCA method
Purity:	> 80% as determined by SDS-PAGE and Coomassie blue staining
Buffer:	25 mM Tris-HCl, 100 mM glycine, pH 7.3, 10% glycerol
Preparation:	Recombinant protein was captured through anti-DDK affinity column followed by conventional chromatography steps.
Note:	For testing in cell culture applications, please filter before use. Note that you may experience some loss of protein during the filtration process.
Storage:	Store at -80°C.
Stability:	Stable for 12 months from the date of receipt of the product under proper storage and handling conditions. Avoid repeated freeze-thaw cycles.
RefSeq:	<u>NP_653272</u>
Locus ID:	144717



[View online »](#)

UniProt ID:	<u>Q8N4B1</u>
RefSeq Size:	3168
Cytogenetics:	12q24.12
RefSeq ORF:	747
Synonyms:	FAM109A; IPIP27A; SES1
Summary:	This gene encodes a protein that localizes to the endosome and interacts with the enzyme, inositol polyphosphate 5-phosphatase OCRL-1. Alternate splicing results in multiple transcript variants. [provided by RefSeq, May 2010]

Product images:



Coomassie blue staining of purified PHETA1 protein (Cat# [TP306625]). The protein was produced from HEK293T cells transfected with PHETA1 cDNA clone (Cat# [RC206625]) using MegaTran 2.0 (Cat# [TT210002]).