

Product datasheet for **TP306622M**

alpha 1 Fetoprotein (AFP) (NM_001134) Human Recombinant Protein

Product data:

Product Type:	Recombinant Proteins
Description:	Recombinant protein of human alpha-fetoprotein (AFP), 100 µg
Species:	Human
Expression Host:	HEK293T
Expression cDNA Clone or AA Sequence:	>RC206622 protein sequence Red =Cloning site Green =Tags(s)

MKWVESIFLIFLLNFTESRTLHRNEYGIASILDSYQCTAEISLADLATIFFAQFVQEATYKEVSKMVKDA
LTAIEKPTGDEQSSGCLENQLPAFLLEELCHEKEILEKYGHSDCCSQSEEGRHNCFLAHKKPTPASIPFQ
VPEPVSCEAYEEDRETFMKNFIYEIARRHPFLYAPTILLWAARYDKIIPSCCKAENAVECFQTKAATVT
KELRESSLLNQHACAVMKNFGTRTFQAITVTKLSQKFTKVNFTIQKLVLDVAHVHEHCCRGDVLDCLQD
GEKIMSYICSQQDTLSNKITECCKLTTLERGQCIIHAENDEKPEGLSPNLNRFGLDRDFNQFSSGEKNIF
LASFVHEYSRRHPQLAVSVILRVAKGYQELLEKCFQTENPLECQDKGEEELQKYIQESQALAKRSCGLFQ
KLGEYYLQNAFLVAYTKKAPQLTSELMAITRKMAATAATCCQLSEDKLLACGEGAADIIIGHLCIRHEM
TPVNPVGVCCTSSYANRRPCFSSLVDETYVPPAFSDDKFIHKDLCAQGVVALQTMKQEFNLNVKQK
PQITEEQLEAVIADFSGLLEKCCQGQEVEVCFEEGQKLISKTRAALGV

TRTRPLEQKLISEEDLAANDILDYKDDDDKV

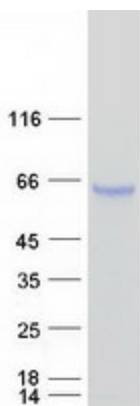
Tag:	C-Myc/DDK
Predicted MW:	66.3 kDa
Concentration:	>0.05 µg/µL as determined by microplate BCA method
Purity:	> 80% as determined by SDS-PAGE and Coomassie blue staining
Buffer:	25 mM Tris-HCl, 100 mM glycine, pH 7.3, 10% glycerol
Preparation:	Recombinant protein was captured through anti-DDK affinity column followed by conventional chromatography steps.
Note:	For testing in cell culture applications, please filter before use. Note that you may experience some loss of protein during the filtration process.
Storage:	Store at -80°C.



[View online »](#)

Stability:	Stable for 12 months from the date of receipt of the product under proper storage and handling conditions. Avoid repeated freeze-thaw cycles.
RefSeq:	NP_001125
Locus ID:	174
UniProt ID:	P02771
RefSeq Size:	2057
Cytogenetics:	4q13.3
RefSeq ORF:	1827
Synonyms:	AFPD; FETA; HPAFP
Summary:	This gene encodes alpha-fetoprotein, a major plasma protein produced by the yolk sac and the liver during fetal life. Alpha-fetoprotein expression in adults is often associated with hepatocarcinoma and with teratoma, and has prognostic value for managing advanced gastric cancer. However, hereditary persistence of alpha-fetoprotein may also be found in individuals with no obvious pathology. The protein is thought to be the fetal counterpart of serum albumin, and the alpha-fetoprotein and albumin genes are present in tandem in the same transcriptional orientation on chromosome 4. Alpha-fetoprotein is found in monomeric as well as dimeric and trimeric forms, and binds copper, nickel, fatty acids and bilirubin. The level of alpha-fetoprotein in amniotic fluid is used to measure renal loss of protein to screen for spina bifida and anencephaly. [provided by RefSeq, Oct 2019]
Protein Families:	Druggable Genome, Secreted Protein

Product images:



Coomassie blue staining of purified AFP protein (Cat# [TP306622]). The protein was produced from HEK293T cells transfected with AFP cDNA clone (Cat# [RC206622]) using MegaTran 2.0 (Cat# [TT210002]).