

Product datasheet for **TP306620M**

Amphiphysin (AMPH) (NM_001635) Human Recombinant Protein

Product data:

Product Type:	Recombinant Proteins
Description:	Recombinant protein of human amphiphysin (AMPH), transcript variant 1, 100 µg
Species:	Human
Expression Host:	HEK293T
Expression cDNA Clone or AA Sequence:	>RC206620 protein sequence Red =Cloning site Green =Tags(s)

MADIKTGIFAKNVQKRLNRAQEKVLQKLGKADETKDEQFEEYVQNFKRQEAEGTRLQRELRGYLAAIKGM
QEASMKLTESLHEVYEPDWYGREDEVKMGVEKCDVLWEDFHQKLVLDGSLTLDTYLGQFPDIKNRIAKRSR
KLVYDYSARHHLEALQSSKRKDESRISKAEEEFQKAQKVFEFNVDLQEELPSLWSRRVGFVNTFKNVS
SLEAKFHKEIAVLCHKLYEVMTKLGDQHADKAFTIQGAPSDSGPLRIAKTPSPPEEPSPLPSPTASPNHT
LAPASPAPARPRSPSQTRKGPVPLPKVPTKELQQENIISFFEDNFVPEISVTTSPSQNEVPEVKKEET
LLDLDFDPFKPEVTPAGSAGVTHSPMSQTLPWDLWTTSTDLVQPASGGSFNGFTQPQDTSLFTMQTDQSM
ICNLAESEQAPPTPKAEPEPLAAVTPAVGLDLGMDTRAEEPVEEAVIIPGADADA AVGTLVSAEAGAPGE
EAEAETATVPAGEGVSLEEAKIGTETTEGAESAQPEAELEATVPQEKVIPSVMIEPASNHEEEGENEIT
IGAEPKETTEDAAPPGPTSETPELATEQKPIQDPQPTPSAPAMGAADQLASAREASQELPPGFLYKVVETL
HDFEAANSDELTLQRGDVWLVPSDSEADQDAGWLGVKESDWLQYRDLATYKGLFPENFTRRLD

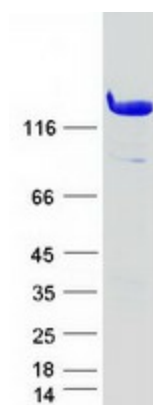
TRTRPLEQKLISEEDLAANDILDYKDDDDKV

Tag:	C-Myc/DDK
Predicted MW:	76.1 kDa
Concentration:	>0.05 µg/µL as determined by microplate BCA method
Purity:	> 80% as determined by SDS-PAGE and Coomassie blue staining
Buffer:	25 mM Tris-HCl, 100 mM glycine, pH 7.3, 10% glycerol
Preparation:	Recombinant protein was captured through anti-DDK affinity column followed by conventional chromatography steps.
Note:	For testing in cell culture applications, please filter before use. Note that you may experience some loss of protein during the filtration process.
Storage:	Store at -80°C.



[View online »](#)

Stability:	Stable for 12 months from the date of receipt of the product under proper storage and handling conditions. Avoid repeated freeze-thaw cycles.
RefSeq:	NP_001626
Locus ID:	273
UniProt ID:	P49418
RefSeq Size:	3426
Cytogenetics:	7p14.1
RefSeq ORF:	2085
Synonyms:	AMPH1
Summary:	This gene encodes a protein associated with the cytoplasmic surface of synaptic vesicles. A subset of patients with stiff-man syndrome who were also affected by breast cancer are positive for autoantibodies against this protein. Alternate splicing of this gene results in two transcript variants encoding different isoforms. Additional splice variants have been described, but their full length sequences have not been determined. A pseudogene of this gene is found on chromosome 11.[provided by RefSeq, Nov 2010]
Protein Families:	Secreted Protein
Protein Pathways:	Fc gamma R-mediated phagocytosis

Product images:

Coomassie blue staining of purified AMPH protein (Cat# [TP306620]). The protein was produced from HEK293T cells transfected with AMPH cDNA clone (Cat# [RC206620]) using MegaTran 2.0 (Cat# [TT210002]).