

## Product datasheet for **TP306612**

### CD2 (NM\_001767) Human Recombinant Protein

#### Product data:

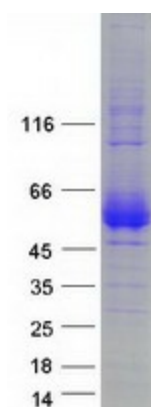
Product Type:	Recombinant Proteins
Description:	Purified recombinant protein of Homo sapiens CD2 molecule (CD2), 20 µg
Species:	Human
Expression Host:	HEK293T
Expression cDNA	>RC206612 protein sequence
Clone or AA Sequence:	Red=Cloning site Green=Tags(s)
	 MSFPCKFVASFLLIFNVSSKGAVSKEITNALETWGALGQDINLDIPSFQMSDDIDDIKWEKTSDDKKKIAQ FRKEKETFKEKDITYKLFKNGTLKIKHLKTDQDIYKVSIIYDTKGKNVLEKIFDLKIQERVSKPKISWTCI NTTLCCEVMNGTDPENLNYQDGKHLKLSQRVITHKWTTLSAKFKCTAGNKVSKESSVEPVSCPEKGLDI YLIIGICGGGSLLMVAVALLVFYITKRKKQRSRRNDEELETRAHRVATEERGRKPQQIPASTPQNPATSQ HPPPPPGHRSQAPSHRPPPPGHRVQHQPQKRPPAPSGTQVHQKGPPLPRPRVQPKPPHGAAENSLSPSS N  TRTRPLEQKLISEEDLAANDILDYKDDDDKV
Tag:	C-Myc/DDK
Predicted MW:	39.3 kDa
Concentration:	>0.05 µg/µL as determined by microplate BCA method
Purity:	> 80% as determined by SDS-PAGE and Coomassie blue staining
Buffer:	25 mM Tris-HCl, 100 mM glycine, pH 7.3, 10% glycerol
Preparation:	Recombinant protein was captured through anti-DDK affinity column followed by conventional chromatography steps.
Note:	For testing in cell culture applications, please filter before use. Note that you may experience some loss of protein during the filtration process.
Storage:	Store at -80°C.
Stability:	Stable for 12 months from the date of receipt of the product under proper storage and handling conditions. Avoid repeated freeze-thaw cycles.
RefSeq:	<a href="#">NP_001758</a>
Locus ID:	914



[View online »](#)

UniProt ID:	<a href="#">P06729</a> , <a href="#">Q53F96</a>
RefSeq Size:	1595
Cytogenetics:	1p13.1
RefSeq ORF:	1053
Synonyms:	LFA-2; SRBC; T11
Summary:	The protein encoded by this gene is a surface antigen found on all peripheral blood T-cells. The encoded protein interacts with LFA3 (CD58) on antigen presenting cells to optimize immune recognition. A locus control region (LCR) has been found in the 3' flanking sequence of this gene. [provided by RefSeq, Jun 2016]
Protein Families:	Druggable Genome, Transmembrane
Protein Pathways:	Cell adhesion molecules (CAMs), Hematopoietic cell lineage

### Product images:



Coomassie blue staining of purified CD2 protein (Cat# TP306612). The protein was produced from HEK293T cells transfected with CD2 cDNA clone (Cat# [RC206612]) using MegaTran 2.0 (Cat# [TT210002]).