

Product datasheet for **TP306607L**

CKMT2 (NM_001825) Human Recombinant Protein

Product data:

Product Type: Recombinant Proteins

Description: Recombinant protein of human creatine kinase, mitochondrial 2 (sarcomeric) (CKMT2), nuclear gene encoding mitochondrial protein, transcript variant 1, 1 mg

Species: Human

Expression Host: HEK293T

Expression cDNA Clone or AA Sequence: >RC206607 protein sequence
Red=Cloning site **Green**=Tags(s)

MASIFSKLLTGRNASLLFATMGTSVLTTGYLLNRQKVCAEVREQPRLFPPSADYPDLRKHNNCMAECLTP
AIYAKLRNKVTPNGYTLTDCIQGTGVDNPGHPFIKTVGMVAGDEESYEVFADLFDVPVIKLRHNGYDPRVMK
HTDLDASKITQGGFDEHYVLSRVRTGRSIRGLSLPPACTRAERREVENVAITALEGLKGDLAGRYK
SEMTEQDQQLIDDHFLFDKPVSPLLTCAGMARDWPDARGIWHNYDKTFLIWINEEDHTRVISMEEKGGM
KRVFERFCRGLKEVERLIQERGWEFMWNERLGYILTCSNLGTGLRAGVHVRIKLSKDPFRFSKILENLR
LQKRGTGGVDAAVADVDDISNIDRIGRSEVELVQIVIDGVNYLVLDCEKKLERGQDIKVPPLPQFGKK

TRTRPLEQKLISEEDLAANDILDYKDDDDKV

Tag: C-Myc/DDK

Predicted MW: 43.3 kDa

Concentration: >0.05 µg/µL as determined by microplate BCA method

Purity: > 80% as determined by SDS-PAGE and Coomassie blue staining

Buffer: 25 mM Tris-HCl, 100 mM glycine, pH 7.3, 10% glycerol

Preparation: Recombinant protein was captured through anti-DDK affinity column followed by conventional chromatography steps.

Note: For testing in cell culture applications, please filter before use. Note that you may experience some loss of protein during the filtration process.

Storage: Store at -80°C.

Stability: Stable for 12 months from the date of receipt of the product under proper storage and handling conditions. Avoid repeated freeze-thaw cycles.

RefSeq: [NP_001816](#)



[View online »](#)

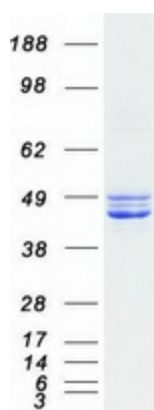
Locus ID: 1160
UniProt ID: [P17540](#), [A0A024RAK5](#)
RefSeq Size: 1650
Cytogenetics: 5q14.1
RefSeq ORF: 1257
Synonyms: SMTCK

Summary: Mitochondrial creatine kinase (MtCK) is responsible for the transfer of high energy phosphate from mitochondria to the cytosolic carrier, creatine. It belongs to the creatine kinase isoenzyme family. It exists as two isoenzymes, sarcomeric MtCK and ubiquitous MtCK, encoded by separate genes. Mitochondrial creatine kinase occurs in two different oligomeric forms: dimers and octamers, in contrast to the exclusively dimeric cytosolic creatine kinase isoenzymes. Sarcomeric mitochondrial creatine kinase has 80% homology with the coding exons of ubiquitous mitochondrial creatine kinase. This gene contains sequences homologous to several motifs that are shared among some nuclear genes encoding mitochondrial proteins and thus may be essential for the coordinated activation of these genes during mitochondrial biogenesis. Three transcript variants encoding the same protein have been found for this gene. [provided by RefSeq, Jul 2008]

Protein Families: Druggable Genome

Protein Pathways: Arginine and proline metabolism, Metabolic pathways

Product images:



Coomassie blue staining of purified CKMT2 protein (Cat# [TP306607]). The protein was produced from HEK293T cells transfected with CKMT2 cDNA clone (Cat# [RC206607]) using MegaTran 2.0 (Cat# [TT210002]).