

## Product datasheet for **TP306588M**

### **PDE1B (NM\_000924) Human Recombinant Protein**

#### **Product data:**

<b>Product Type:</b>	Recombinant Proteins
<b>Description:</b>	Recombinant protein of human phosphodiesterase 1B, calmodulin-dependent (PDE1B), 100 µg
<b>Species:</b>	Human
<b>Expression Host:</b>	HEK293T
<b>Expression cDNA Clone or AA Sequence:</b>	>RC206588 protein sequence <b>Red</b> =Cloning site <b>Green</b> =Tags(s)

MELSPRSPPEMLEESDCPSPLELKSAPSKKMWIKLRSLRLRYMVKQLENGEINIEELKKNLEYTASLLEAV  
YIDETRQILDTEDELQELRSDAVPSEVRDWLASTFTQQARAKGRRAEEKPKFRSIVHAVQAGIFVERMFR  
RTYTSVGPYSTAVLNCLKNLDLWCFDVFSLNQAADDHALRTIVFELLTRHNLSRFKIPTVFLMSFLDA  
LETGYGKYKNPYHNQIHAADVTQTVHCFLLRTGMVHCLSEIELLAIIFAAAIHDYEHTGTTNSFHIQTKS  
ECAIVYNDRSVLENHHISSVFRLMQDDEMNI FINLTKDEFVELRALVIEMVLATDMSCHFQQVKMTKTAL  
QQLERIDKPKALSLLLHAADISHPTKQWLVHSRWTKALMEEFFRQGDKEAELGLPFSPLCDRTSTLVAQS  
QIGFIDFIVEPTFSVLTDAEKSVQPLADEDSSKNQPSFQWRQPSLDVEVGDPNPDVVSFRSTWVKRIQ  
ENKQKWKERAASGITNQMSIDELSPCEEEAPPSPAEDEHNQNGNLD

**TRTRPLEQKLISEEDLAANDILDYKDDDDKV**

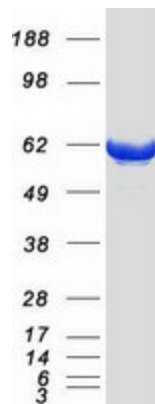
<b>Tag:</b>	C-Myc/DDK
<b>Predicted MW:</b>	61.2 kDa
<b>Concentration:</b>	>0.05 µg/µL as determined by microplate BCA method
<b>Purity:</b>	> 80% as determined by SDS-PAGE and Coomassie blue staining
<b>Buffer:</b>	25 mM Tris-HCl, 100 mM glycine, pH 7.3, 10% glycerol
<b>Preparation:</b>	Recombinant protein was captured through anti-DDK affinity column followed by conventional chromatography steps.
<b>Note:</b>	For testing in cell culture applications, please filter before use. Note that you may experience some loss of protein during the filtration process.
<b>Storage:</b>	Store at -80°C.



[View online »](#)

<b>Stability:</b>	Stable for 12 months from the date of receipt of the product under proper storage and handling conditions. Avoid repeated freeze-thaw cycles.
<b>RefSeq:</b>	<a href="#">NP_000915</a>
<b>Locus ID:</b>	5153
<b>UniProt ID:</b>	<a href="#">Q01064</a> , <a href="#">A0A024RB59</a>
<b>RefSeq Size:</b>	3463
<b>Cytogenetics:</b>	12q13.2
<b>RefSeq ORF:</b>	1608
<b>Synonyms:</b>	HEL-S-79p; PDE1B1; PDES1B
<b>Summary:</b>	The protein encoded by this gene belongs to the cyclic nucleotide phosphodiesterase (PDE) family, and PDE1 subfamily. Members of the PDE1 family are calmodulin-dependent PDEs that are stimulated by a calcium-calmodulin complex. This PDE has dual-specificity for the second messengers, cAMP and cGMP, with a preference for cGMP as a substrate. cAMP and cGMP function as key regulators of many important physiological processes. Alternatively spliced transcript variants encoding different isoforms have been described for this gene.[provided by RefSeq, Jul 2011]
<b>Protein Families:</b>	Druggable Genome
<b>Protein Pathways:</b>	Calcium signaling pathway, Progesterone-mediated oocyte maturation, Purine metabolism

### Product images:



Coomassie blue staining of purified PDE1B protein (Cat# [TP306588]). The protein was produced from HEK293T cells transfected with PDE1B cDNA clone (Cat# [RC206588]) using MegaTran 2.0 (Cat# [TT210002]).