

Product datasheet for **TP306583L**

MAPK11 (NM_002751) Human Recombinant Protein

Product data:

Product Type: Recombinant Proteins

Description: Recombinant protein of human mitogen-activated protein kinase 11 (MAPK11), 1 mg

Species: Human

Expression Host: HEK293T

Expression cDNA Clone or AA Sequence: >RC206583 protein sequence
Red=Cloning site **Green**=Tags(s)

MSGPRAGFYRQELNKTWVEVPQRLQGLRPVGSAYDARLRQKVAVKLSRPFQSLIHARRTYR
ELRLKHLKHENVIGLLDVFTPATSIEDFSEVYLVTTLMGADLNNIVKQCALSDEHVQFLVYQLLRGLKY
IHSAGIIHRDLKPSNVAVNEDCELRILDFGLARQADEEMTGYVATRWYRAPEIMLNWMHYNQTVDIWSVG
CIMAELLQGKALFPGSDYIDQLKRIMEVGTSPSEVLAKISSEHARTYIQSLPPMPQKDLSSIFRGANPL
AIDLLGRMLVLDSDQRVSAEALAHAYFSQYHDPEDPEAEPYDESVEAKERTLEEWKELTYQEVLSFKP
PEPPKPPGSLEIEQ

TRTRPLEQKLISEEDLAANDILDYKDDDDKV

Tag: C-Myc/DDK

Predicted MW: 41.2 kDa

Concentration: >0.05 µg/µL as determined by microplate BCA method

Purity: > 80% as determined by SDS-PAGE and Coomassie blue staining

Buffer: 25 mM Tris-HCl, 100 mM glycine, pH 7.3, 10% glycerol

Preparation: Recombinant protein was captured through anti-DDK affinity column followed by conventional chromatography steps.

Note: For testing in cell culture applications, please filter before use. Note that you may experience some loss of protein during the filtration process.

Storage: Store at -80°C.

Stability: Stable for 12 months from the date of receipt of the product under proper storage and handling conditions. Avoid repeated freeze-thaw cycles.

RefSeq: [NP_002742](#)

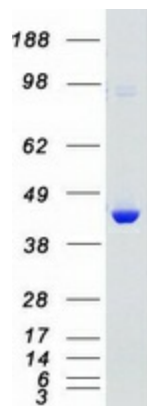
Locus ID: 5600



[View online »](#)

UniProt ID:	Q15759
RefSeq Size:	2463
Cytogenetics:	22q13.33
RefSeq ORF:	1092
Synonyms:	p38-2; P38B; p38Beta; P38BETA2; PRKM11; SAPK2; SAPK2B
Summary:	This gene encodes a member of a family of protein kinases that are involved in the integration of biochemical signals for a wide variety of cellular processes, including cell proliferation, differentiation, transcriptional regulation, and development. The encoded protein can be activated by proinflammatory cytokines and environmental stresses through phosphorylation by mitogen activated protein kinase kinases (MKKs). Alternative splicing results in multiple transcript variants. [provided by RefSeq, Mar 2014]
Protein Families:	Druggable Genome, Protein Kinase
Protein Pathways:	Amyotrophic lateral sclerosis (ALS), Epithelial cell signaling in Helicobacter pylori infection, Fc epsilon RI signaling pathway, GnRH signaling pathway, Leukocyte transendothelial migration, MAPK signaling pathway, Neurotrophin signaling pathway, NOD-like receptor signaling pathway, Progesterone-mediated oocyte maturation, RIG-I-like receptor signaling pathway, T cell receptor signaling pathway, Toll-like receptor signaling pathway, VEGF signaling pathway

Product images:



Coomassie blue staining of purified MAPK11 protein (Cat# [TP306583]). The protein was produced from HEK293T cells transfected with MAPK11 cDNA clone (Cat# [RC206583]) using MegaTran 2.0 (Cat# [TT210002]).