

Product datasheet for **TP306579M**

Exodus 2 (CCL21) (NM_002989) Human Recombinant Protein

Product data:

Product Type:	Recombinant Proteins
Description:	Recombinant protein of human chemokine (C-C motif) ligand 21 (CCL21), 100 µg
Species:	Human
Expression Host:	HEK293T
Expression cDNA Clone or AA Sequence:	>RC206579 protein sequence Red =Cloning site Green =Tags(s)
	MAQSLALSLLILVLAFGIPRTQGS DGG AQCCLKYSQRKIPAKVRSYRKQEPSLGCSIPAILFLPRKRS QAELCADPKELWVQQLMQHLDKTPSPQKPAQGCRCRDRGASKTGKKKGKSGKCKRTERSQTPKGP
	TRTRPLEQKLISEEDLAANDILDYKDDDDKV
Tag:	C-Myc/DDK
Predicted MW:	12.2 kDa
Concentration:	>0.05 µg/µL as determined by microplate BCA method
Purity:	> 80% as determined by SDS-PAGE and Coomassie blue staining
Buffer:	25 mM Tris-HCl, 100 mM glycine, pH 7.3, 10% glycerol
Preparation:	Recombinant protein was captured through anti-DDK affinity column followed by conventional chromatography steps.
Note:	For testing in cell culture applications, please filter before use. Note that you may experience some loss of protein during the filtration process.
Storage:	Store at -80°C.
Stability:	Stable for 12 months from the date of receipt of the product under proper storage and handling conditions. Avoid repeated freeze-thaw cycles.
RefSeq:	NP_002980
Locus ID:	6366
UniProt ID:	O00585 , Q6ICR7
RefSeq Size:	913
Cytogenetics:	9p13.3



[View online »](#)

RefSeq ORF: 402

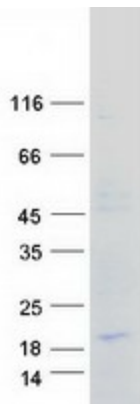
Synonyms: 6Ckine; CKb9; ECL; SCYA21; SLC; TCA4

Summary: This antimicrobial gene is one of several CC cytokine genes clustered on the p-arm of chromosome 9. Cytokines are a family of secreted proteins involved in immunoregulatory and inflammatory processes. The CC cytokines are proteins characterized by two adjacent cysteines. Similar to other chemokines the protein encoded by this gene inhibits hemopoiesis and stimulates chemotaxis. This protein is chemotactic in vitro for thymocytes and activated T cells, but not for B cells, macrophages, or neutrophils. The cytokine encoded by this gene may also play a role in mediating homing of lymphocytes to secondary lymphoid organs. It is a high affinity functional ligand for chemokine receptor 7 that is expressed on T and B lymphocytes and a known receptor for another member of the cytokine family (small inducible cytokine A19). [provided by RefSeq, Sep 2014]

Protein Families: Druggable Genome, Secreted Protein

Protein Pathways: Chemokine signaling pathway, Cytokine-cytokine receptor interaction

Product images:



Coomassie blue staining of purified CCL21 protein (Cat# [TP306579]). The protein was produced from HEK293T cells transfected with CCL21 cDNA clone (Cat# [RC206579]) using MegaTran 2.0 (Cat# [TT210002]).