

## Product datasheet for **TP306578L**

### MDC (CCL22) (NM\_002990) Human Recombinant Protein

#### Product data:

Product Type:	Recombinant Proteins
Description:	Recombinant protein of human chemokine (C-C motif) ligand 22 (CCL22), 1 mg
Species:	Human
Expression Host:	HEK293T
Expression cDNA Clone or AA Sequence:	>RC206578 protein sequence <b>Red</b> =Cloning site <b>Green</b> =Tags(s)
	MARLQTALLVVLVLLAVALQATEAGPYGANMEDSVCCRDYVRYRLPLRVVKHFWTSDSCPRPGVLLTF RDKEICADPRVPWVKMILNKLSQ
	<b>TRTRPLEQKLISEEDLAANDILDYKDDDDKV</b>
Tag:	C-Myc/DDK
Predicted MW:	8 kDa
Concentration:	>0.05 µg/µL as determined by microplate BCA method
Purity:	> 80% as determined by SDS-PAGE and Coomassie blue staining
Buffer:	25 mM Tris-HCl, 100 mM glycine, pH 7.3, 10% glycerol
Preparation:	Recombinant protein was captured through anti-DDK affinity column followed by conventional chromatography steps.
Note:	For testing in cell culture applications, please filter before use. Note that you may experience some loss of protein during the filtration process.
Storage:	Store at -80°C.
Stability:	Stable for 12 months from the date of receipt of the product under proper storage and handling conditions. Avoid repeated freeze-thaw cycles.
RefSeq:	<a href="#">NP_002981</a>
Locus ID:	6367
UniProt ID:	<a href="#">Q00626</a>
RefSeq Size:	2933
Cytogenetics:	16q21



[View online »](#)

RefSeq ORF: 279

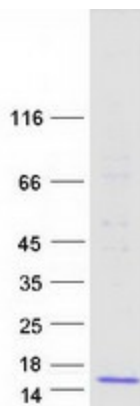
Synonyms: A-152E5.1; ABCD-1; DC/B-CK; MDC; SCYA22; STCP-1

**Summary:** This antimicrobial gene is one of several Cys-Cys (CC) cytokine genes clustered on the q arm of chromosome 16. Cytokines are a family of secreted proteins involved in immunoregulatory and inflammatory processes. The CC cytokines are proteins characterized by two adjacent cysteines. The cytokine encoded by this gene displays chemotactic activity for monocytes, dendritic cells, natural killer cells and for chronically activated T lymphocytes. It also displays a mild activity for primary activated T lymphocytes and has no chemoattractant activity for neutrophils, eosinophils and resting T lymphocytes. The product of this gene binds to chemokine receptor CCR4. This chemokine may play a role in the trafficking of activated T lymphocytes to inflammatory sites and other aspects of activated T lymphocyte physiology. [provided by RefSeq, Sep 2014]

**Protein Families:** Druggable Genome, Secreted Protein, Transmembrane

**Protein Pathways:** Chemokine signaling pathway, Cytokine-cytokine receptor interaction

### Product images:



Coomassie blue staining of purified CCL22 protein (Cat# [TP306578]). The protein was produced from HEK293T cells transfected with CCL22 cDNA clone (Cat# [RC206578]) using MegaTran 2.0 (Cat# [TT210002]).