

## Product datasheet for **TP306577**

### alpha Sarcoglycan (SGCA) (NM\_000023) Human Recombinant Protein

#### Product data:

Product Type:	Recombinant Proteins
Description:	Recombinant protein of human sarcoglycan, alpha (50kDa dystrophin-associated glycoprotein) (SGCA), transcript variant 1, 20 µg
Species:	Human
Expression Host:	HEK293T
Expression cDNA Clone or AA Sequence:	>RC206577 protein sequence <b>Red</b> =Cloning site <b>Green</b> =Tags(s)

MAETLFWTPLLWLLAGLGDTEAQQTTLHPLVGRVHVHTLDHETFLSLPEHVAVPPAVHITYHAHLQGH  
DLPRWLRYTQRSPHHPGFLYGSATPEDRGLQVIEVTAYNRDSFDTRQRLVLEIGDPEGPLLPYQAEFLV  
RSHDAEEVLPSTPASRFLSALGGLWEPGELQLLNVTLSALDRGGRVPLPIEGRKEGVYIKVGSASPFSTCL  
KMVASPDSHARCAQGQPPLLSCYDTLAPHFRVDWCNVTLVDKSVPEPADEVPTPGDGILEHDPFFCPPT  
APDRDFLVDALVTLVPLLVALLLTLLAYVMCCRREGRLKRDLATSDIQMVHHTIHGNTTEELRQMAAS  
REVPRPLSTLPMFNVHTGERLPPRVDSAQVPLILDQH

**TRTRPLEQKLISEEDLAANDILDYKDDDDKV**

Tag:	C-Myc/DDK
Predicted MW:	40.4 kDa
Concentration:	>0.05 µg/µL as determined by microplate BCA method
Purity:	> 80% as determined by SDS-PAGE and Coomassie blue staining
Buffer:	25 mM Tris-HCl, 100 mM glycine, pH 7.3, 10% glycerol
Preparation:	Recombinant protein was captured through anti-DDK affinity column followed by conventional chromatography steps.
Note:	For testing in cell culture applications, please filter before use. Note that you may experience some loss of protein during the filtration process.
Storage:	Store at -80°C.
Stability:	Stable for 12 months from the date of receipt of the product under proper storage and handling conditions. Avoid repeated freeze-thaw cycles.
RefSeq:	<a href="#">NP_000014</a>



[View online »](#)

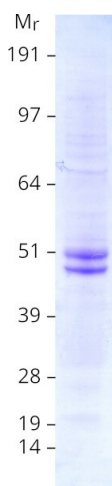
Locus ID:	6442
UniProt ID:	<a href="#">Q16586</a>
RefSeq Size:	1441
Cytogenetics:	17q21.33
RefSeq ORF:	1161
Synonyms:	50DAG; adhalin; ADL; DAG2; DMDA2; LGMD2D; LGMDR3; SCARMD1

**Summary:** This gene encodes a component of the dystrophin-glycoprotein complex (DGC), which is critical to the stability of muscle fiber membranes and to the linking of the actin cytoskeleton to the extracellular matrix. Its expression is thought to be restricted to striated muscle. Mutations in this gene result in type 2D autosomal recessive limb-girdle muscular dystrophy. Multiple transcript variants encoding different isoforms have been found for this gene. [provided by RefSeq, Oct 2008]

**Protein Families:** Druggable Genome, Transmembrane

**Protein Pathways:** Arrhythmogenic right ventricular cardiomyopathy (ARVC), Dilated cardiomyopathy, Hypertrophic cardiomyopathy (HCM), Viral myocarditis

### Product images:



Coomassie blue staining of purified SGCA protein (Cat# TP306577). The protein was produced from HEK293T cells transfected with SGCA cDNA clone (Cat# [RC206577]) using MegaTran 2.0 (Cat# [TT210002]).