

Product datasheet for **TP306569L**

Myosin (MYL4) (NM_001002841) Human Recombinant Protein

Product data:

Product Type: Recombinant Proteins

Description: Recombinant protein of human myosin, light chain 4, alkali; atrial, embryonic (MYL4), transcript variant 1, 1 mg

Species: Human

Expression Host: HEK293T

Expression cDNA Clone or AA Sequence: >RC206569 protein sequence
Red=Cloning site **Green**=Tags(s)

MAPKKPEPKKEAAKPAPAPAPAPAPAPAPEAPKEPAFDPKSVKIDFTADQIEEFKEAFSLFDRTPTGE
MKITYGQCGDVLRLALGQNPTNAEVLRLVLGKPKPEEMNVKMLDFETFLPILQHISRNKEQGTIEDFVEGLR
VFDKESNGTVMGAELRHVLATLGEKMTEAEVEQLLAGQEDANGCINYEAFVKHIMSG

TRTRPLEQKLISEEDLAANDILDYKDDDDKV

Tag: C-Myc/DDK

Predicted MW: 21.4 kDa

Concentration: >0.05 µg/µL as determined by microplate BCA method

Purity: > 80% as determined by SDS-PAGE and Coomassie blue staining

Buffer: 25 mM Tris-HCl, 100 mM glycine, pH 7.3, 10% glycerol

Preparation: Recombinant protein was captured through anti-DDK affinity column followed by conventional chromatography steps.

Note: For testing in cell culture applications, please filter before use. Note that you may experience some loss of protein during the filtration process.

Storage: Store at -80°C.

Stability: Stable for 12 months from the date of receipt of the product under proper storage and handling conditions. Avoid repeated freeze-thaw cycles.

RefSeq: [NP_001002841](#)

Locus ID: 4635

UniProt ID: [P12829](#)



[View online »](#)

RefSeq Size: 934

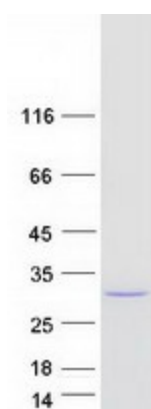
Cytogenetics: 17q21.32

RefSeq ORF: 591

Synonyms: ALC1; AMLC; GT1; PRO1957

Summary: Myosin is a hexameric ATPase cellular motor protein. It is composed of two myosin heavy chains, two nonphosphorylatable myosin alkali light chains, and two phosphorylatable myosin regulatory light chains. This gene encodes a myosin alkali light chain that is found in embryonic muscle and adult atria. Two alternatively spliced transcript variants encoding the same protein have been found for this gene. [provided by RefSeq, Jul 2008]

Product images:



Coomassie blue staining of purified MYL4 protein (Cat# [TP306569]). The protein was produced from HEK293T cells transfected with MYL4 cDNA clone (Cat# [RC206569]) using MegaTran 2.0 (Cat# [TT210002]).