

Product datasheet for **TP306561M**

CETP (NM_000078) Human Recombinant Protein

Product data:

Product Type:	Recombinant Proteins
Description:	Recombinant protein of human cholesteryl ester transfer protein, plasma (CETP), 100 µg
Species:	Human
Expression Host:	HEK293T
Expression cDNA Clone or AA Sequence:	>RC206561 protein sequence Red =Cloning site Green =Tags(s)
	<p>MLAATVLTALLGNAHACSKGTSHEAGIVCRITKPALLVLNHETAKVIQTAFQRASYPDITGEKAMMLLG QVKYGLHNIQISHLSIASSQVELVEAKSIDVSIQNVSVVFKGTLKYGYTTAWWLIDQSIDFEIDSAIDL QINTQLTCDSGRVRTDAPDCYLSFHKLLLHLQGEREPGWIKQLFTNFISFTLKLVLKQGICKEINVISNI MADFVQTRAASILSDGDIGVDISLTGDPVITASYLESHHKGHFIYKNVSEDLPLPTFSPTLLGDSRMLYF WFSERVFHSLAKVAFQDGRLMLSLMGDEFKAVLETWGFNTNQEIQEVVGGFPSQAQVTVHCLKMPKISC QNKGVVWNSSVMVKFLFPRPDQQHSVAYTFEEDIVTTVQASYSKKLFLSLLDFQITPKTVSNLTESSE SIQSFLQSMITAVGIPEVMSRLEVVFALMNSKGVSLFDIINPEIITRDGFLLLQMDFGFPEHLLLVDFLQ SLS</p> <p>TRTRPLEQKLISEEDLAANDILDYKDDDDKV</p>
Tag:	C-Myc/DDK
Predicted MW:	53 kDa
Concentration:	>0.05 µg/µL as determined by microplate BCA method
Purity:	> 80% as determined by SDS-PAGE and Coomassie blue staining
Buffer:	25 mM Tris-HCl, 100 mM glycine, pH 7.3, 10% glycerol
Preparation:	Recombinant protein was captured through anti-DDK affinity column followed by conventional chromatography steps.
Note:	For testing in cell culture applications, please filter before use. Note that you may experience some loss of protein during the filtration process.
Storage:	Store at -80°C.
Stability:	Stable for 12 months from the date of receipt of the product under proper storage and handling conditions. Avoid repeated freeze-thaw cycles.



[View online >](#)

RefSeq: [NP_000069](#)

Locus ID: 1071

UniProt ID: [P11597](#), [A0A0S2Z3F6](#)

RefSeq Size: 1717

Cytogenetics: 16q13

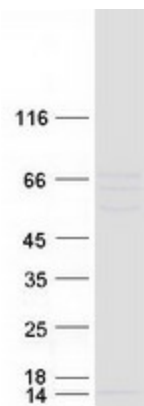
RefSeq ORF: 1479

Synonyms: BPIFF; HDLCQ10

Summary: The protein encoded by this gene is found in plasma, where it is involved in the transfer of cholesteryl ester from high density lipoprotein (HDL) to other lipoproteins. Defects in this gene are a cause of hyperalphalipoproteinemia 1 (HALP1). Two transcript variants encoding different isoforms have been found for this gene. [provided by RefSeq, Oct 2013]

Protein Families: Druggable Genome, Secreted Protein

Product images:



Coomassie blue staining of purified CETP protein (Cat# [TP306561]). The protein was produced from HEK293T cells transfected with CETP cDNA clone (Cat# [RC206561]) using MegaTran 2.0 (Cat# [TT210002]).