

Product datasheet for **TP306556M**

Myocilin (MYOC) (NM_000261) Human Recombinant Protein

Product data:

Product Type:	Recombinant Proteins
Description:	Recombinant protein of human myocilin, trabecular meshwork inducible glucocorticoid response (MYOC), 100 µg
Species:	Human
Expression Host:	HEK293T
Expression cDNA Clone or AA Sequence:	>RC206556 representing NM_000261 Red=Cloning site Green=Tags(s)

MRFFCARCCSFGPEMPAVQLLLLACLWVDVGARTAQLRKANDQSGRCQYTFVSPNESSCPEQSQAMSV
IHNLQRDSSTQRLDLEATKARLSSLESLLHQLTLDQAARPQETQEGLQRELGLRRERDQLETQTRELET
AYSNLLRDKSVLEEEKRLRQENENLARRLESSSQEVARLRRGQCPQTRDTARAVPPGSREVSTWNLDLTL
AFQELKSELTEVPASRILKESPSGYLRSGEGDTGCGELVWVGEPLTLRTAETITGKYGVWMRDPKPTYPY
TQETTWRIDTVGTDVRQVFEYDLISQFMQGYPSKVHILPRPLESTGAVVYSGSLYFQGAESRTVIRYELN
TETVKAKEIPGAGYHGQFPYSWGGYTDIDLAVDEAGLWVIYSTDEAKGAVLSKLNPENLELEQTWETN
IRKQSVANAFIICGTLTYVSSYTSADATVNFAYDTGTGISKTLTIPFKNRYKYSSMIDYNPLEKCLFAWD
NLNMVTYDIKLSKM

TRTRPLEQKLISEEDLAANDILDYKDDDDKV

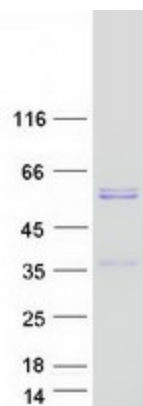
Tag:	C-Myc/DDK
Predicted MW:	56.8 kDa
Concentration:	>0.05 µg/µL as determined by microplate BCA method
Purity:	> 80% as determined by SDS-PAGE and Coomassie blue staining
Buffer:	25 mM Tris-HCl, 100 mM glycine, pH 7.3, 10% glycerol
Preparation:	Recombinant protein was captured through anti-DDK affinity column followed by conventional chromatography steps.
Note:	For testing in cell culture applications, please filter before use. Note that you may experience some loss of protein during the filtration process.
Storage:	Store at -80°C.



[View online »](#)

Stability:	Stable for 12 months from the date of receipt of the product under proper storage and handling conditions. Avoid repeated freeze-thaw cycles.
RefSeq:	NP_000252
Locus ID:	4653
UniProt ID:	Q99972 , A0A0S2Z421
RefSeq Size:	2061
Cytogenetics:	1q24.3
RefSeq ORF:	1512
Synonyms:	GLC1A; GPOA; JOAG; JOAG1; TIGR
Summary:	MYOC encodes the protein myocilin, which is believed to have a role in cytoskeletal function. MYOC is expressed in many ocular tissues, including the trabecular meshwork, and was revealed to be the trabecular meshwork glucocorticoid-inducible response protein (TIGR). The trabecular meshwork is a specialized eye tissue essential in regulating intraocular pressure, and mutations in MYOC have been identified as the cause of hereditary juvenile-onset open-angle glaucoma. [provided by RefSeq, Jul 2008]
Protein Families:	Druggable Genome, Secreted Protein

Product images:



Coomassie blue staining of purified MYOC protein (Cat# [TP306556]). The protein was produced from HEK293T cells transfected with MYOC cDNA clone (Cat# [RC206556]) using MegaTran 2.0 (Cat# [TT210002]).