

## Product datasheet for **TP306556L**

### Myocilin (MYOC) (NM\_000261) Human Recombinant Protein

#### Product data:

Product Type:	Recombinant Proteins
Description:	Recombinant protein of human myocilin, trabecular meshwork inducible glucocorticoid response (MYOC), 1 mg
Species:	Human
Expression Host:	HEK293T
Expression cDNA Clone or AA Sequence:	>RC206556 representing NM_000261 Red=Cloning site Green=Tags(s)

MRFFCARCCSFGPEMPAVQLLLLACLWVDVGARTAQLRKANDQSGRCQYTFVSPNESSCPEQSQAMSV  
IHNLQRDSSTQRLDLEATKARLSSLESLLHQLTLDQAARPQETQEGLQRELGLRRERDQLETQTRELET  
AYSNLLRDKSVLEEEKRLRQENENLARRLESSSQEVARLRRGQCPQTRDTARAVPPGSREVSTWNLDTL  
AFQELKSELTEVPASRILKESPSGYLRSGEGDTGCGELVWVGEPLTLRTAETITGKYGVWMRDPKPTYPY  
TQETTWRIDTVGTDVRQVFEYDLISQFMQGYPSKVHILPRPLESTGAVVYSGSLYFQGAESRTVIRYELN  
TETVKAKEIPGAGYHGQFPYSWGGYTDIDLAVDEAGLWVIYSTDEAKGAIVLSKLNPENLELEQTWETN  
IRKQSVANAFIICGTLTYVSSYTSADATVNFAYDTGTGISKTLTIPFKNRYKYSSMIDYNPLEKCLFAWD  
NLNMVTYDIKLSKM

TRTRPLEQKLISEEDLAANDILDYKDDDDKV

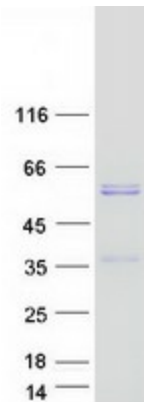
Tag:	C-Myc/DDK
Predicted MW:	56.8 kDa
Concentration:	>0.05 µg/µL as determined by microplate BCA method
Purity:	> 80% as determined by SDS-PAGE and Coomassie blue staining
Buffer:	25 mM Tris-HCl, 100 mM glycine, pH 7.3, 10% glycerol
Preparation:	Recombinant protein was captured through anti-DDK affinity column followed by conventional chromatography steps.
Note:	For testing in cell culture applications, please filter before use. Note that you may experience some loss of protein during the filtration process.
Storage:	Store at -80°C.



[View online »](#)

<b>Stability:</b>	Stable for 12 months from the date of receipt of the product under proper storage and handling conditions. Avoid repeated freeze-thaw cycles.
<b>RefSeq:</b>	<a href="#">NP_000252</a>
<b>Locus ID:</b>	4653
<b>UniProt ID:</b>	<a href="#">Q99972</a> , <a href="#">A0A0S2Z421</a>
<b>RefSeq Size:</b>	2061
<b>Cytogenetics:</b>	1q24.3
<b>RefSeq ORF:</b>	1512
<b>Synonyms:</b>	GLC1A; GPOA; JOAG; JOAG1; TIGR
<b>Summary:</b>	MYOC encodes the protein myocilin, which is believed to have a role in cytoskeletal function. MYOC is expressed in many ocular tissues, including the trabecular meshwork, and was revealed to be the trabecular meshwork glucocorticoid-inducible response protein (TIGR). The trabecular meshwork is a specialized eye tissue essential in regulating intraocular pressure, and mutations in MYOC have been identified as the cause of hereditary juvenile-onset open-angle glaucoma. [provided by RefSeq, Jul 2008]
<b>Protein Families:</b>	Druggable Genome, Secreted Protein

### Product images:



Coomassie blue staining of purified MYOC protein (Cat# [TP306556]). The protein was produced from HEK293T cells transfected with MYOC cDNA clone (Cat# [RC206556]) using MegaTran 2.0 (Cat# [TT210002]).