

Product datasheet for **TP306552**

CART (CARTPT) (NM_004291) Human Recombinant Protein

Product data:

Product Type: Recombinant Proteins

Description: Recombinant protein of human CART prepropeptide (CARTPT), 20 µg

Species: Human

Expression Host: HEK293T

**Expression cDNA Clone
or AA Sequence:** >RC206552 protein sequence
Red=Cloning site **Green**=Tags(s)

MESSRVLLPLLGAALLLMLPLLGTRAQEDAELQPRALDIYSAVDDASHEKELIEALQEVLLKLLKSKRVP
IYEKKYGQVPMCDAGEQCAVRKRGARIGKLCDCPRGTSCNSFLLKCL

TRTRPLEQKLISEEDLAANDILDYKDDDDKV

Tag: C-Myc/DDK

Predicted MW: 9.9 kDa

Concentration: >0.05 µg/µL as determined by microplate BCA method

Purity: > 80% as determined by SDS-PAGE and Coomassie blue staining

Buffer: 25 mM Tris-HCl, 100 mM glycine, pH 7.3, 10% glycerol

Preparation: Recombinant protein was captured through anti-DDK affinity column followed by conventional chromatography steps.

Note: For testing in cell culture applications, please filter before use. Note that you may experience some loss of protein during the filtration process.

Storage: Store at -80°C.

Stability: Stable for 12 months from the date of receipt of the product under proper storage and handling conditions. Avoid repeated freeze-thaw cycles.

RefSeq: [NP_004282](#)

Locus ID: 9607

UniProt ID: [Q16568](#)

RefSeq Size: 933

Cytogenetics: 5q13.2



[View online »](#)

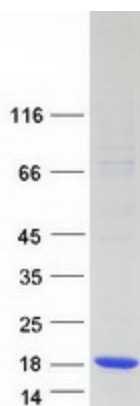
RefSeq ORF: 348

Synonyms: CART

Summary: This gene encodes a preproprotein that is proteolytically processed to generate multiple biologically active peptides. These peptides play a role in appetite, energy balance, maintenance of body weight, reward and addiction, and the stress response. Expression of a similar gene transcript in rodents is upregulated following administration of cocaine and amphetamine. Mutations in this gene are associated with susceptibility to obesity in humans. [provided by RefSeq, Feb 2016]

Protein Families: Secreted Protein

Product images:



Coomassie blue staining of purified CARTPT protein (Cat# TP306552). The protein was produced from HEK293T cells transfected with CARTPT cDNA clone (Cat# [RC206552]) using MegaTran 2.0 (Cat# [TT210002]).